



## Table of Cambrian and Ordovician formations for northwestern Virginia

This [document](#) is provided by the [Smithsonian Institution Archives](#). We welcome you to use it for personal and educational uses. For commercial uses, please contact [osiaref@si.edu](mailto:osiaref@si.edu).

### Please cite as –

Short citation:

Smithsonian Institution Archives, Accesssion 16-032, SIA\_16-032\_B01\_F03

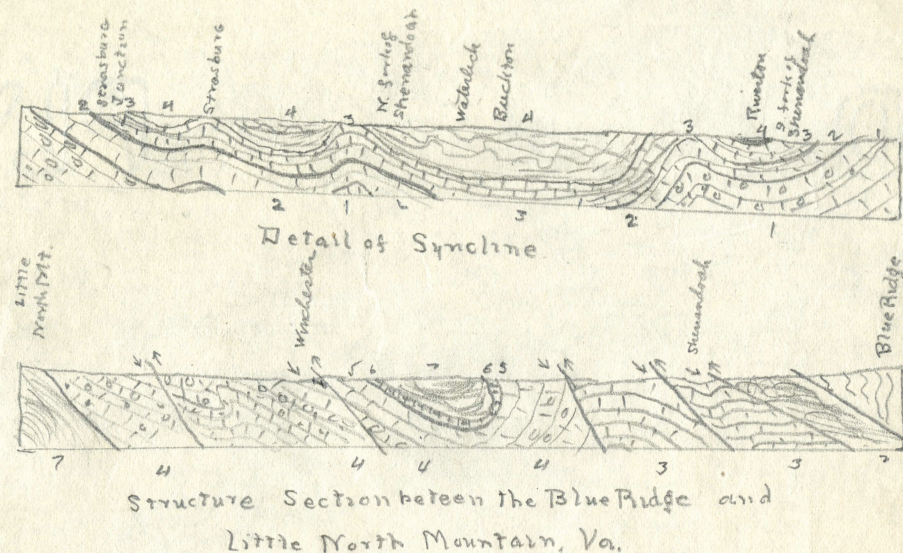
Long citation:

Smithsonian Institution Archives, Accesssion 16-032, C. Wythe Cooke, “Table of Cambrian and Ordovician formations for northwestern Virginia”, SIA\_16-032\_B01\_F03, [http://siarchives.si.edu/collections/fbr\\_item\\_modsi7892](http://siarchives.si.edu/collections/fbr_item_modsi7892)

When citing our collections online, please link to the Smithsonian Institution Archives <http://siarchives.si.edu>.



Ordovician	Massanutten Sandstone	Tuscarora. g.ite.	300 ±	Coarse conglomerate and quartzite
		Turnata (Lorraine)	200 ±	Sandy, reddish shales and coarser sandstone
	Martinsburg shale	Upper	500 ±	Gray & buff sandy shales
		Middle	1000 ±	Dark gray or black fossiliferous shale
		Lower	100-300	Calcareous drab shales in lower half; more argillaceous strata in upper part.
Ordovician	Shenandoah Group	Chambersburg ls.	400	More or less pure and argillaceous ls. and calcareous shales.
		Stone River ls.	900 ±	Heavily bedded dolomitic ls. with purer, colored strata in upper part.
Ordovician		Natural Bridge ls.	3500 ±	Blue-gray dolomitic ls. upper $\frac{2}{3}$ , cherty (Knox dolomite); lower $\frac{1}{3}$ , less cherty & more shaly (Moleschuck)
Saratogan		Bona Vista shale	600-900	Reddish shales with mottled ls.
Acadian		Shenwood ls.	1600-1800	White crystalline dolomite, gray magnesian ls. with occasional beds of argillaceous ls. and shale.
Georgian.		Antietam ss.	500 ±	Fine white ss. and sandy shales
		Harpers shale	1000 ±	Bluish gray sandy shales.
		Wheaton ss.	100-900	Massive gray & white ss.
		Loudoun formation	0-800	Slates, shales, ss., ls., & conglomerates
Algonkian?		Catoctin schist	1000+	Grayish-blue altered diabase with masses of eruptive granite.



(West of Strasburg Jct. to Strasburg)  
 General Section of Middle and Upper Ordovician Strata in N.W. (Martinsburg shale, of Trenton, Utica, and Eden age at top)

Chambersburg l.s.

4 Gray, earthy l.s., with numerous fossils in upper part. 70'

3. Thin-bedded and massive dove l.s. holding Trilobites in more or less abundance. 125'

2. Nodular and thin-bedded gray argillaceous l.s. with numerous fossils in lower third 104'

1. Pure l.s. with cherty portions 90'

Stone River l.s.

2. Heavily bedded pure dove l.s. 100'

1. Alternating pure and magnesian dove limestone. 500'

Table of Cambrian and Ordovician formations for Northwestern Virginia