



Smithsonian Institution Archives

Field notes, Texas and New Mexico, June 6-September 27, 1902

This document is provided by the [Smithsonian Institution Archives](http://siarchives.si.edu).

Please cite as –

Smithsonian Institution Archives, Record Unit 7267, SIA_007267_B01_F20

When citing our collections online, please link to the Smithsonian Institution Archives
<http://siarchives.si.edu>.

1902

Texas
New Mexico



Vernon Bailey

Dept. of Agl.

Washington, D.C.

1902

Residence 1834, Kal. Ave.

1902

June 6 Left Washington 4:15 PM
via B&O for Jefferson, Tex.

June 7,

Cincinnati about 9 AM.

St. Louis 4:45

Left St. Louis 8:20 P.M.,
via Iron Mtn. R.R.

June 8, Little Rock, ~~7:25 AM~~

Arkadelphia

Passer domesticus com.

Tyrannus tyrannus -

Cotton 6-10 inches high

Corn 1-3 feet

Few flowers, foliage dense.

Gurdon

Fulton

Sabal

Baptisia

Trachoma

Jefferson Tex June 8.

<i>Agelaius vocifer</i>	2 heard
<i>Colinus</i>	2 seen
<i>Corphuleus pileatus</i>	1 long
<i>Melanerpes erythrocephalus</i>	1 seen
Swift	abn
<i>Zenaidura</i>	com
<i>Sialia sialis</i>	com
<i>Mimus carolinensis</i>	com
<i>Icteria virens</i>	com
<i>Piranga rubra</i>	com
<i>Geothlypis trichas</i>	1 ♂ com
<i>Spizella socialis</i>	com
<i>Vireo olivaceus</i>	"
<i>Turdus wood</i>	com
<i>Tyrannus tyrannus</i>	com
<i>Passer domesticus</i>	abn. in town
<i>Cyanocitta</i>	com
<i>Falco sparverius</i>	2
<i>Trochilites</i> ?	
<i>Cathartes aura</i>	com
<i>Corvus am</i>	com
<i>Syrnium nebulosum</i> ?	4

<i>Polyptila caerulea</i>	com
<i>Cardinalis</i>	1
<i>Mniotilta varia</i>	2
<i>Deleliscia</i>	
<i>Parus</i>	
<i>Mimus polyglottos</i>	com
<i>Coccyzus</i>	seen
<i>Thryothorus caudimacris</i>	com
<i>Ardea carulea</i>	2
<i>Tantalus loculator</i>	5
<i>Coutopus virens</i>	com
<i>Mimus polyglottos</i>	"
<i>Progne subis</i>	1
<i>Passer domesticus</i>	abn.

June 9

<i>Chordeiles</i>	1
<i>Cyanospiza cyanea</i>	com

June 10 at Richard Caines

<i>Icteria miss</i>	2
<i>Redstart</i>	2

June 11 - Richard Cranes -

Vireo - white eye, com, nests & eggs.
Myiarchus crinitus com.
Dendroica *primis* Warbler²

Ardea carolinensis -

Bird's skin and eyelids bluish
iris white, legs & toes black
with yellowish paler & joints

Storachs, 34 frogs, 7 fish, 13 crustaceans,
Cunjevers
1 ~~Salamander~~, 1 orvid, 1 dragonfly,
1 spider, 1 grasshopper.

Tantulus locustator

Bubo

ward

Synonymum

com.

Anticarsomya

"

June 12

Melanerpes carolinensis, com.
Dryobates borealis

June 13

Colaptes auratus 1
Sitta carolinensis 1
Cordulus

a few

Empidonax

1 pair

Icterus spurius

1 ♂

Quercus cyanea -

1

Tuppern

Quercus phellos

" nigra

" alba 1

" macrocarpa? com

" falcata?

Pinus strobus

" mitis

Juniperus

Cassidix

Liquidambar

Nyssa

Betula

Populus

Salix

Pandocacia

Ulmus

Hickory

Walnut

Chinopsis

Sycamore

Crab apple,

Crataegus

Prunus americana!
" dwarf plum

June 14 - to Marshall.

June 16 Marshall 4:25

Westerns - prairie, good.

Shreveport

June 17

Woke up at Logansport

Over to Joaquin - & to

Timpson & back to

Joaquin

June 18

Pinus mitis

" *tida*

Taxodium

Juniperus virginiana

Quercus nigra

" *alba*

" *falcata*

" *lyrata*

" "pin oak"

" *prinus*

"

Liquidambar

Nyssa

Salix
Chimaphila

Persimmon

Ilex opaca

" diandra?

Acer

Ironwood

Blue beech

Cornus florida

Magrobia

Crataegus

Ulmus americanus

" crassifolia?

Hickory

Juglans nigra

Sycamore

Vitis 3

Liriodendron radicans

Chenopodium

Passiflora

Smilax

Rubus - 2 blackberries

Vaccinium

Gallassarcia

Sambucus

Phytolacca

Podophyllum

Boerhaavia

Toaquim, Tex. Jan 18

Ardea herodias com
" *herodias*? 1 reported
Colinus 16 149.
Zenaidura com
Cathartes "
Buteo
Falco sparverius 2
Syrnium heard
Coccyzus americanus, com
Dryobates heard
Melanerpes carolinensis com
" *erythrocephalus* "
Colaptes cafer puratus - 2
Agelaius com
Seturus tulospurus 1
Chimney swift, com.
Progne subis com
Vireo olivaceus "
" *white-eyed* "
" *flavifrons* "
Dendroica
Sayornis nigricans com
Empidonax ?
Myiarchus cinerascens com

Sitta carolinensis 1
Poliophtila caerulea com
Minus polyglottos "
Parus carolinensis "
" *bicolor*? "
Sialia sialis com
Amotilla varia, July 1899
Cardinalis com
Piranga rubra "
Tyrannus tyrannus 1
Antrostomus heard
Spizella socialis, com.
Passer domesticus com in town

June 20

Joagum

Timpson

more hilly, red soil,
Nacogdoches.

Angelina R.

Sabat - along river
Spanish Mass, a little
Lufkin.

Stopped at Ritterbach House.
Same kind of country

June 21 -

Lufkin - 9:45 a.m.

Zavalla

Pinus palustris - begins
10 $\frac{1}{2}$ mi. N. of Zavalla -
beautiful part of it
Rockland - & river

Hilly, rocky, crudes,
deer springs, grass.
Good country, bad town.

Colmansville

Still hilly

Carrolls

still hilly & rough
Woodville

Norren -

Good locality to work
Georgia pine, open
country, crudes, grass

Edge of prairie, about
15 mi. N. of Beaumont
Beaumont.
at Crosby Hotel

June 22

Bannock to Sabine Pass
Ricefields below Gladys
near which is the
only a sight track. a house
in distance - good
place to go for day hunt.

Taylor's Bayou - near
Port Arthur - a good
location for sat. work
+ bayous - probably a
place to stay - at
little hotel or section house

June 22

<i>Quiscalus</i>	com
<i>Agelaius</i> + yg.	com
<i>Xanthocephalus</i>?	+
<i>Sturnella</i>	com
<i>Otocoris</i>	3
<i>Chordeiles</i>	aba
<i>Rallus</i>	8
<i>Ardea herodias</i>	com
" <i>viridis</i>	2
<i>Symphoricarpos</i>	com
<i>Pipilo eryth.</i>	com
<i>Ammodramus</i> ?	big + dark
<i>Tyrannus tyrannus</i>	com
<i>Himantopus mexicanus</i>	2
<i>Passer domesticus</i>	com
<i>Phalacrocorax</i>	1
<i>Cistothorus</i>	com
<i>Ardea herodias</i>	1
<i>Cathartes aura</i>	com
<i>Cathartes</i>	+

Sabine

Salt grass, *Ditrochis*
Salicornia
Suaeda
Heliotropium
Atriplex
Baccharis

composita bush

June 23

Beaumont westward

Prairie & groves

Prairie plants

Asclepias 2.

little Laurel like bush

Coneflowers

Rudbeckia

Grindelia

big white mallow?

purple flowered

green pod bean bush

many grasses

Grove, "Orcutt", species

Past oak,

live oak

Liquidambar

white stained Laurel tree

gray bass

Sabal

in places *Pinus taeda*

China a nice little town

on big prairie in rice

fields - good to work.

lots of roads, timber

away to the north.

Sour Lake - Station & store

+ hotel? on good

prairie near edge of timber

most of Saw Lake are
acrobly *P. palustris*?
mixed with the groves
& timber strips or in
solid, round noths.

Raywood, on big
prairie - rice all around.

Liberty at edge of
woods, cypress.
the best woods I ever saw
wide bottom land & wood
to Dayton -

Edge of prairie again
reaches far north
Pines, tall in grove

Crosby
Saw Prairie R.
woods - magnolia
cypress pines etc.,
gums, oaks

Brewer & Houston

Birds

<i>Ardea herodias</i>	com
" <i>viridis</i>	"
<i>Rallus</i> ? big	"
<i>Buteo</i>	1
<i>Cathartes</i>	a few
<i>Cathartes</i> <i>Leucisura</i>	com
<i>Colinus</i>	a few
<i>Sturnella</i>	com
<i>Quiscalus</i>	"
<i>Agelaius</i>	"
<i>Tyrannus tyrannus</i>	"
<i>Mimus polyglottos</i>	"
<i>Progne</i>	"
<i>Ammodramus</i> ?	"

Houston

<i>Molothrus ater</i>	3
<i>Milvulus</i> 2 ad + 3 yg.	
<i>Icterus sparivus</i>	2
<i>Chondestes</i>	com
<i>Passer domesticus</i>	abn.

June 24 -

Houston - Hotel Logans 10 AM

Prosopis juliflora 1 tree
" *pubescens* a few trees

Georgy hills con. edge of town
no more to Richmond

Pinus teddy } last seen about
" *mitis* } 6 mi. W. of Houston

mostly prairie

Richmond -

Hercules first seen

Last of Liquidambar

Zelkova all prairie

Eagle Lake

rich prairie with short grass
fires burning

Allington -

Scrubby live + post oak
timber loaded with moss
one mesquite.

Columbus & Colorado R.

Splendid live oaks + moss
more mesquite

Scrubby timber, or openings of
live-post + black oak +
other low trees in Col. R. Val.
Warren - mainly prairie
dry but very good farms
of cotton, corn, + some grain.

Salisbury dunes

Engle -

Flint

More mesquite, grass more
bushy, corn dried up

Wilder

lots of mesquite - real arid.

Haswood

June 25 - San Antonio

Hesperis abn

Prosopis juliflora "

Farkensonia aculeata "

Center Point 12 M

Lycopodium

Juniperus

Quercus virginiana

" nigra

"

"

"

"

Platanus a few

Prosopis juliflora

Lillandsia recurvata abn.

Kerrville - the preceding &

Celtis

Siospiros tex

Ulmus crassifolius

Cordalea?

Custer Point

June 26 & 27

<i>Agelaius vociferus</i>	com
<i>Columba texianus</i>	"
<i>Zenaidura</i>	"
<i>Scardafella inca</i>	"
<i>Cathartes aura</i>	"
<i>Catherpes atrata</i>	"
<i>Buteo b. calurus</i>	1
<i>Melanerpes</i>	com
<i>Oryzopsis schreieri</i>	"
<i>Melospiza</i>	"
<i>Myiarchus</i>	
<i>Contopus virens</i> ?	1
<i>Corvus</i>	nest
<i>Cyanocitta</i> ?	1
<i>Molothrus</i>	2
<i>Piranga rubra</i> ?	com
<i>Chondestes</i>	abn
<i>Petrochelidon</i>	com - breeding
<i>Ceryle alcyon</i>	1
<i>Trochilus</i>	1
<i>Icterus spurius</i>	2 pairs
<i>Sturna vulgaris</i>	"

<i>Progne subis</i> ?	abn
<i>Mimus polyglottus</i>	abn
<i>Thryomanes</i>	1 pair, nesting
<i>Parus carolinensis</i> ?	com
<i>Parus bicolor</i> ?	"
<i>Cyanospiza versicolor</i>	"
<i>Cardinalis cardinalis</i>	"

June 29 Kerrville -

<i>Coccyzus americanus</i>	1
<i>Spizella pusilla</i> ?	com
<i>Ardea virescens</i>	1
<i>Antrostomus macrurus</i> ?	1

June 30 Woodcamp near

Ingram

July 1, over to Lacey -

On top of ridges

Juniperus

Quercus

"

"

"

"

"

"

Cercis

Prunus pennsylvanica

Viburnum lentiformis?

Xanthoxylum

Celtis

Juglans rupestris - mainly bare

Coccoloba

Mimosa biuncifera? specimen

Ampelopsis

Rhus toxicodendron

"

Bumelia?

Smilax

Vitis

10 species

Ampelba cismhardia

On limestone cliffs

Morus celtidifolius, dwarf

Garrya

Yucca rupicola

Cereus

"

Acacia

360

In gulches

Fraxinus viridis berlandieriana

Quercus

Tilia

Ptelea

June 29 - July

Korrville & Ingram

Ardea virescens com
Agelaius vociferus "
Colinus texensis, yg. July 3
Zenaidura macroura com
Cathartes aura "
Catheristes atrata "
Buteo b. calurus a few
Chordeiles com
Platyonotus "
Antrostomus "
Trochilus "
Ceryle alcyon
Ceryle copanensis 1
~~*Ceryle americana*~~ com
Melanerpes com
~~*Geococcyx*~~
Dryobates s. bairdi "
Empidonax "
Contopus virens? "
Sayornis phoebe? "
Myiarchus cinerascens com
Melospiza fasciata "
Molothrus "
Icterus spurius 5 com

Astragalinus psaltria com
Passer domesticus in town.
Chondestes abn.
Spizella arizonae? com
" *palmeri*? a few.
Pipilo chlorura 1 on sage
Cardinalis abn.
Quiraca a few.
Cyanospiza cyris com.
Piranga rubra? "
~~*Amphispiza cedrorum*~~ hard
Progne subis "
Petrochelidon nests, "
Vireo flavifrons, abn., "
" *atricapillus* hard-
Dendroica dominica? sp. com
" *chrysoparia* a few.
Geothlypis formosus 1
Mniotilta varia com
Icteria virens? com
Mimus polyglottos abn.
Catherpes 1

Thryothorus ludovicianus com

Thryomanes

Parus b. texensis com

" *carolinensis*? spec. "

Polióptila plumbea? "

Sialia sialis "

Above Japonia July 7-10

Ardea herodias 1

Anas platyrhynchos com

Myctidromus nivalis r yg, com

Aphalocara r yg, "

Greater Yellowlegs 1

Kerrville etc.

Valley plants

Prosopis juliflora com

Tillandsia recurvata "

Quercus virginiana "

Toxodion "

Juglans rupestris "

Ulmus crassifolia "

" *fulva*!

Berberis trifoliata

Platanus

Salix nigra?

Opuntia engelmanni - a little -

Diopis inaequalis

Cephalanthus

Hickaria

Pean -

Kerrville + region

Generally distributed species

Quercus - macrocarpa

July 7 Camp 8 AM

Kerrville 1660

Camp 1760

Next fork above Johnson Fork 2000

Camp 15 mi. W. of Joplin 2150

Cypress end at fork at 2000

Mesquite " " "

July 8

15 mi. W. of Japónica — 2150

Quercus

"

"

"

Juniperus

Bumelia lycioides

Juglans rupestris

Arbutus texana v. *retia*

Platanus

Citrus

Cercis

Cephaelis

Lonicera

Symphoricarpos

Rosa

Rhus toxicodendron

" *araliacea*

" *allata*?

Forsteria

Prunus hog plum

Bergonia

Quercus rupestris

" *angustifolia*

" *b. grandiflora* - a few

Opuntia engelmannii

"

Echinocactus

Cercis parviflora?

" *lanceolata*

Dasylirion

Nolina

Mammillaria

July 10

2493.

Left camp 9 AM - 2450

Lunch - 15 mi. 2450

Aimphispiza bilineata 2300

Peneca cassini abn. "

Pipilo mesoleucos "

Sturnella + yg. abn.
Camp 2.5 mi. dry cañon 2400

July 11

Camp - 2.5 mi. 9 AM. 2400

Thompson

Came 18 mi. Camp 2650

July 12 - Camp, 9 AM, 2600

Rock Springs 11 mi. 2700

Correct altitude 2520

Out to Wades Ranch 7 mi.

South. 2400

July 13 down to Hackberry Cr.

Correct not above.

Pean

Quercus ^{occidentalis} ~~prinos~~

" ^{texasana} ~~coccinea~~ + spec

" ^{lacey} - spec.

Ulmus crassifolia

Platanus

Prunus pennsylvanica?

Quercus undulata - spec.

Quercus ^{fusiformis} ~~virginiana~~ - spec.

July 15 to Rock Springs. 2500
mesquite - 2 - 100 ft - com.

Camp - 2 mi. out 2475

July 16. Camp 8.30 AM 2475

10 mi.

Lanius a family

Lanius Sonoran *hawaii*

Mesquite - abn.

Rhus microphylla

Acacia 3 species

Besleria triplata

Zizyphus obtusifolia

Spilledia nudicaulis

Ceanothus

Opuntia leptocaulis

Spermophilus

Amphispiza

Nolina texana abn.

Yucca stricta

" *repens*

Lanius

Myiarchus cinerascens

Lunch 11 mi. 2500

Cordia alliodora

Lycopodium

Camp. 2600

July 17. Camp 8.30 AM 2550

to near Wheat 2600

Down a draw to 2300

over ridge 2400

Night camp, 27 mi., 2450

Agave lachrymans

July 18 Camp 8 AM 2400

On ridge 2500

Boerhaavia

Yucca

Agave

Chilopsis

Boer Lake 2000

June

July 19 Camp 1900

June

Down Devils R. 13 mi. 1700

Camp at source of Devils R.

July 20 - Sunday

at camp all day -

Devils River - July 19 -

Anthus
Amphispiza bilineata 2 ♂♂ / ad
Ardea herodias 1
 " *viridis*, typical, a few
Myctodora vidua im 1
Helidramus solitarius, 2
Actitis macularia com
Agelaius vociferus "
Colinus v. texensis "
Callipepla squamata a few.
~~*Colinus virginianus*~~
Zenaidura + nests com
Cathartes "
Catharista "
Buteo b. calurus a few
 " *abbreviatus* 1
 " *swainsoni*
Falco sparverius 1
 " *mexicanus*
Megascops com
Bubo heard
Geococcyx com
Coccyzus "
Ceryle alcyon 1
 " *septentrionalis* com

Oryzopsis n. bairdi com
Melanerpes auriferus "
Phalaenoptilus "
Chondestes "
Trochilus "
Muscivora forficatus "
Myiarchus cinerascens "
Contopus virens
Empidonax
Sayornis phoebe, 1 heard
Molothrus ater com
Icterus spurius "
 "
Chrysomitris psaltria com
Chondestes "
Amphispiza bilineata com
Aimophila "
Pipilo maculatus "
Cardinalis
Pyrrhuloxia
Guiraca
Cyanospiza cyanea? com.

Cyanospiza versicolor, 1. Suspect
Piranga rubra com
Progne subis ?
Vireo olivaceus com
" *flaviceps* ?
" *noctivagus* ?
" *atricapillus* "
" *huttoni* ? "
Otocoris longicauda "
Dendroica "
Sturnus n. notabilis July 18, "
Mimus polyglottas abn
Heliodytes crumiecapillus com
Catherpes "
Thryothorus ludovicianus "
Thryomanes bewickii ? "
Auriparus flaviceps nests "
Polioptila "
Parus bicolor tex. ? "

Plants Devils River.

Pecan
Juglans rupestris
Sapindus marginatus
Unguadia speciosa
Celtis occidentalis
" *pallida*
Platanus
Bumelia
Chilopsis saligna
Quercus virginiana
" " *fruticosa* " shrubby
" *undulata* " abn
" " *bursera*
Morus
Salix
Juniperus - scarier -
Liospiros
Berberis trifoliata
Forestiera angustifolia
Fouquieria
Leucophyllum texanum
Lycium berlandieri
Prunus glandulosa ^{*Caroliniana* ?}

Prosopis juliflora
Eysenhardtia amplexoides, com
Cercis occidentalis "
Hopmania oxycarpa "
Mimosa borealis "
Leucaena pulchellula "
 "
Acacia roemeriana com
Laba "
Sophora secundiflora com
Forsythia angustifolia "
Condalia spathulata? "
Zizyphus obtusifolia "
Koeberlinia
Rhus virens
 " *microphylla*
 " *Toxicodendron*
Ceanothus
Eriodera nevadensis com
Smilax
Vitis
Cucurbita
Maximowiczia

Ptelea t. mollis com
Phytolacca
Cleome
Lippia
Saccharum angustifolia
Agave schottii
Yucca naccocarpa
 " *rigida*
 " ~~*capitata*~~ - ?
Hesperaloe
Dasylicium
Notina - ?
Opuntia engelmannii, big
 " " little
 " *brachispina*
 " *pectinatus*
 " *truncata leptocaulis*
Cereus paucispinus
 " *arborescens*?
Mamillaria haydeni?
 " little
Echinocactus longispinus

Echinocactus

Euphorbia - leafless, on rocks

Atriplex

Argemone

Xanthium

July 24 - Camp 8 AM. 1725

Last crossing river 1650

Top of mesa 1850

Comstock 1800

" correct altitude 1550

July 25, Camp, ~~arrived at~~ 1710

Comstock arrived at 1710

Lunch 5 mi. 1600

Larrea

Suaeda spicosa

Cercia constricta

" straight claws

Kromeria angustifolia

River camp, 8 mi. 1450

Pistacia mexicana abn.

Nicotiana glauca "

Arundinaria

Baccharis

July 31, Pecos River

Ceryle alcyon 1

Icterus parisorum 1 pair

Antrostomus maculatus 1

Carpodacus a few

Columbigallina small flock

Cyanus " " "

Falco mexicanus 1 nest

" *spurius*

Buteo borealis com

Aug. 1. to Painted Caves.

to Langtry.

Aug. 3 Left Langtry 4 PM

Aug. 4 - Valentine

Aug. 6 - Donald arrived

Valentine

Proserpin a few every bush

Acacia constricta " " "

Xerobolus " " "

Lizyphus " " "

Microchlamys com -

Krameria canescens "

Nolina texana "

Yucca stricta "

" *microcarpa*, scarce

Microseris binnepia "

Grass - abundant



July 31. Pecos bigg.

Cercalcyon 1

Taurus perissurus 1 pair

Antrostomus macrurus 1

Carpodacus a few

Columbigallina with blue

Cyanocitta " " 4

Falco mexicanus 4 nest

" *spurius*

Buteo borealis com

Aug. 1. to Painted Caves.

Langtry.

Aug. 3 Left Langtry 4 PM

Aug. 4 - Valer

Aug. 6 - Donald arrived

Valentine

Prosopis a few dwarf bushes

Acacia constricta " " "

Koeberlinia " " "

Zizyphus " " "

Microchlamys com -

Krameria canescens "

Nolina texana "

Yucca stricta "

" *microcarpa*, scarce

Monarda binnifera "

Grass - abundant

Valentin Aug. 4 -

Bartramia Aug. 8, 3. First

Agelaius vociferus com

Aetideus naucularia (Dodd)

Numenius long - said to be
com. later

Zenaidura com

Cathartes aura "

Speotyto 7 mi. out - "

Corvus cryptoleucus, com +
young + nests - fresh.

Sturnella hospes, egg, fresh, com.

See old + its young, specimens

Melothrus ater - com

Chondestes

Calomospiza - 5 Aug. 9

Pooecia cassini, abn. breeding
+ in full song.

Passer domesticus, abn. in town

Chlidon - com

Aug. 14

Lanius 1

Microchlopus 1, ♂

Circus 1, ♂

Golden Eagle 1

Otocoris 2

Numenius 1, Dodd

Ardea herodias im. 1 "

Aug. 9. Out to C.O. Finleys

Valentin 4424 - ranch 5424

Cathartes

Buteo b. calurus

Falco sparverius

Bubo + yg.

Aquila chrysaetos 1

Zenaidura com

Columbia fuscata 6 - Aug. 10.

Miniopteryx glauca com

Chondestes "

Salpinctes "

Trochilus ? com

Pipilo megalonyx "

Catantops 1

Apeltes com

Harporhynchus "

Amphispiza bilineata a few

Sayornis saya 1

Tyrannus vociferans com

Campylorhynchus, nests in acacia

Guiraca com.

up Livermore Aug. 13

Aimophila

Psaltiriparus plumbeus

Thryothorus

Pipilo maculatus? heard

Corvus sinuatus 1

Columba fasciata com

Microtus melanoleucus "

Falco mexicanus 1

Cathartes aura

S. alpinus

Catherpes

Colaptes

Aphelocoma

Finleys & mts

Ducerus blue " com

" black "

Taxa stans (on rocks) "

Chilopsis (in woods) "

Adolfia infesta com

Proserpio - a few on but slopes

Ziglyphus "

Fouquieria " "

Opuntia engelmanni " "

Opuntia arborescens com

Manilasia hyderi "

Cereus paucispinus "

Echinocactus horzenthobius "

Yucca stricta "

" *warwickii* "

Dasylirion "

Microserenus "

Aug. 12. Finley's Ranch

Bones under Bubo nest

Lepus arizonae

texianus

Neotoma micropus

" mexicana

Cratogeomys

Dipodomys spectabilis

Perognathus ?

Peromyscus

Onychomys

Spilogale

Bat 2 ?

Horned Owl

Snake

Bird - 1 mandible of chicken?

Insects skulls + legs gone.

$\frac{3}{4}$ of total Lepus arizonae

Aug. 13 up Sierrita

Snail 8:15 5425
eggs of oak & junipers
Pinus ponderosa 4600
Left house 10:30 4750

Quercus grisea 6000-top
" texana (black) " "
" undulata (seeds) " "
" hypoleuca 6600-8000
" neomexicana 7500-8700

Populus tremuloides 7800-8000
Cercocarpus 6600-8700
Philadelphus 6600-pk.
Arbutus 6800-
Yucca low 6600-8000
Potato 7000-top

Pinus strobus 8000-
Quercus dwarf 8200-8800

Reals - reading 8800
on peak

Juniper white spines
Cercocarpus
" white spines
Philadelphus

Spiraea
Symphoricarpos
Rhamnus
Juncea
Celtis reticulata

Aug. 14 back to Valentine

Aug. 18 Valentine, L.P.M.

Buteo borealis
" swainsoni abn.
Curlew
Ravens abn.
mainly lower Sonoran, upper
on cold slopes.



Sierra Blanca

El Paso

Aug. 19 at El Paso

Aug. 20 to Van Horn

Van HornPure Low Sonoran

Passiflora fulgens abn
Acaelia
Mimosa
Larrea abn
Koeberlinia spirota "
Baccharis  "
 "  "
Ephedra nevadensis "
 " *trifurcata* "
Fouquieria "
Agave lachrymans "
Yucca stricta "
 " *macrocarpa* "
Dasythrix on hills
Microchloa, scarce
Ceanothus on hills
Leucophylon "
Quercus - behind rocks
Garrea "
Yucca brevifolia
Lippia
Rhus microphylla
Quercus angustifolia

In hills

Rhus trilobata
Philadelphus
Cercocarpus microphylla
Tecoma stans
Quercus grisea - spec.
 " *undulata*?
Garrya wrightii
Ceanothus
Fraxinus angustifolia?
Juniperus a few
Pinus - 1 nat. pine
Rhus visida
Chilopsis
Dasythrix
Nolina, a little,
Yucca - about

Van Horn

- Bartonia* a few
Aegilites "
Calippa squamata com
Z. chaidura "
Cathartes "
Buteo calurus "
 " *swainsoni* "
Falco sparverius "
Dryobates s. bairdi 1
Geococcyx com
Coscorus cryptoleucus "
Molothrus
Calomospiza num.
Bucea cassini com
Chondestes
Amphispiza com
Mimus polyglottos abn
Hesperophthalmus 2
Campylorhynchus + nests com
Salpinctes on rocks
Catherpes
 Houston, Tex. June 23
 465, a. *Sabal adiantum* Raf. (Oak-
 465, b. *Morella crifea*
 465, c. *Ratibida*

Plant Catalogue 1902

- No.
 466. *Vaccinium* "
 Jefferson, Tex. June 13,
 467. *Vaccinium*
 Jefferson, Tex. June 12
 468. *Pyrus*
 Jefferson, Tex. June 12
 469. *Xanthoxylum*
 Kerrville, Tex. July 1.
 470. *Fern*
 Kerrville, Tex. July 1.
 471. *Adiantum capillus veneris*
 Kerrville, Tex. July 1.
 472. *Ceanothus americanus*
 Kerrville, Tex. July 1.
 465 d. *Compositae* shrub -
 Sabine, Texas

473. *Mimosa*

Herrville, Tex. July 1.

474. *Forestiera mexicana*

Herrville, Tex. July 1.

475. *Mimosa*

Devils River, July 22

475a. *Mimosa*?

476. *Mimosa*

Devils R., July 22

476a. *Lachnaria puberula*

477. *Acacia retusissima*?

Devils R., July 22.

477a. *Ceanothus*

478. *S. ^{Pellaea} ~~sp.~~ ^{flexuosa}*

478A. *Notholana sinuata*

Devils River, Tex. July 23.

479 *Prunus*

Devils R., July 22,

479a. *Ephedra*

480. a, b, c d e f g

Rhus mexicana
Pistach

Rio Grande, near Comstock
July 29.

481. *Oenothera*

Valentine, Tex. Aug. 12.

482. *Pineaphyllon*?

Van Horn, Tex. July 23.

483. *Garrya wrightii*

Van Horn, Tex. Aug. 23.

484. *Acacia*

Van Horn, Tex. Aug. 23.

485. *Quercus x griesbachii*?

Van Horn, Tex. Aug. 23

486. *Ceanothus*

Zoyah, (30 mi. NW.) Aug. 29

486b. *Rhus ^{sp.} ~~sp.~~*
South of Howard Creek

Cary

486a. *Ephedra*

Ft. Stockton, 10 mi. W.

Cary

487. *Forestiera*?

Salt Basin (W. of Guadalupe Mts.)

Sept. 2. 1902. Tex.

488. *Prosopis juliflora*

Toyah, Tex. Aug. 29.

489. *Artimisia*

Guadalupe Mts., N. Mex. Sept. 4.

490. *Aphelappus*?

Guadalupe Mts., N. Mex. Sept. 4.

491. *Gutierrezia*

Guadalupe Mts., N. Mex. Sept. 4.

492. *Ribes*

Sierra Blanca, N. Mex. Sept. 12.

12000 feet

493. *Ribes*

Sierra Blanca, N. Mex. Sept. 12.

12000 feet

494. *Primula*

Orthocarpus

Sierra Blanca, N. Mex. Sept. 12.

495. *Quercus*?

Sierra Blanca, N. Mex. Sept. 12.

496. *Liatris punctata*

Logan, N. Mex. Sept. 23.

496a. *Persea*?

497. *Mimosa borealis*

Dalea purpurea

Dalea

498. *Prosopis j.*

Logan, N. Mex. Sept. 23.

499. *Prosopis j.*

Logan, N. Mex. Sept. 23.

107500 see page 100.

Aug. 28. Toiyah, 9:30.
5000

Aracia constricta abu.

Prosopis 1

Aracia, big pod. "

Hochsternia "

Zizyphus "

Fouquieria - on hills

Condalia abu

Rhus microphylla "

Baccharis "

Lyceum "

Noon - 15 mi.

Juniperus

Opuntia arborescens

Microrhamnus

Yucca macrocarpa

Camp at Cottonwoods

35 mi. 5870.

Aug. 29.

Mixed upper & lower savanna,
on ridge 4400.

At Camp beyond Smith Ranch
4000, - camp 30 mi.

Camp on Wayland Ranch
30 miles

Aug. 30 - 9. A.M.

1 untelope - 2 blacktail.

Noon on Hall Ranch 4450

Quercus, *Pinus*

Over escarpment 4900

Quercus 4975

Arbutus "

Camp at Canon 5250

Came 25 mi.

Aug. 31. At Wt. 8500.

Melanospiza formicivora 2.

Dendroica bairdi 1

Aereonastes melanoleucus 2

Phalaenoptilus com

Archibuteo ferrugineus? 1
Falco mexicanus 2

" *sparverius*
Columba fasciata 2
Trochilus?

Pipilo arcticus? 1
" *resolvens* com

Amphispiza "
Parus gambeli

Geothlypis naevigilioris? 1
Vireo

Lanius
Psathripus plumbeus, com

Piranga hepatica 2

Salt Lake com

Catherpes 2

Sep. 1. Over ridge, about 5500
Down Guadalupe Canyon

Salt Lake Valley
Camp - in valley 4000,

Sep. 2. Camp 9 A.M. 3850 ft.
Bottom of valley about 3750
Lunch at N. Mex. line. 3800.

Camp - 20 mi. 3800

Sep. 3. - Camp 7 A.M. 3800
Lunch 20 mi. 4100

Camp 15 mi. 4700
in Lower Sonoran

Sept. 4. Camp 9. 4400
Merula occidentalis 4750
Agave opuntia "
Yucca low 4900
Nolina "
Dasyliodon 1.

Upper Sonoran begin	4900	Garrua, fuzzy	5400
end of Larrea	4750	Pinus edulis	5450
" Zizyphus	4650	Quercus - dwarf blue "	"
" Buxetaria	4750	<u>Camp</u> 10 mi.	6050
" Prosopis	4650	Sept. 5 - 9 AM	6050
" Lycium	"	Ridge	6525
" Rhus microphylla	5400	Pinus ponderosa	"
" Fouquieria	5100	second ridge	6625
" Yucca stricta	"	Sonoran gulch to	6300
" " " " " " " " " "	5100	Lunch 15 mi.	6600
Atriplex canescens	5400	Pseudotsuga M.	7000
		Quercus black	"

Eurotia lanata	4700	Ridge	7500
Juncifera	5000	Wood	7200
Lycium pallidum	"	Camp - a mile below	7000
Cercocarpus pauciflorus	"	Camp about 25 mi.	
Garrua fuzzy			

Woods Creek 7 mi.	5175	Sept. 6 9 AM	7000
Artemisia frigida	5400	Lunch	7000
" frigida	6000	top of ridge about	7300
Lunch camp 9 mi.	5400	Puercas Creek	6600
		Camp 12 mi E. of Cloudcroft	7500

Sept. 7 Camp, 1 PM. 7500

Pinus strobus 8000

Populus tremuloides "

Abies "

Picea NE "

Abies "

Camp 8700

Sept 8 Camp "

Cloudcroft 7150

Ridge 7300

Camp - Silver Spr. Can. 8700

Sept. 9 - Camp 12. "

High Camp 6 mi. 8500

Tuckey Camp

Sept. 10 Camp 8500

Summit 8700

Down N.W. canyon

Transition begins 8000

Eutamias luteus - first 7800

Agency 7000

west edge of upper Sonoran

Fork of Elk about 7800

Saw Mill - Elk Spr. - 8000.

Sept. 11

Elk Summit 9 mi. 8600

Camp - 5 mi. 7300

Sept. 12 Camp 7300

Agency 6800

Summit

7850

Ruodoso 6950

up Ruodoso Cr.

Camp 7300

Sept. 13 up white mts.

Camp	8300	7200	Cornus asperifolia	-9300
Populus angustifolia	-8200		Rhus glabra?	-8500
" tremuloides	ns. 8000	-1100	Rosa	-9000
Myrica acicoides	-7000		Salix cordata var	-9200
Weir grandidentata	7200-9500		Rubus - R. corymbosus	-9000
" glabra	" -9200		Fragaria ^{rough leaf} strawberry	-
Fraxinus viridis?	-7000		Potentilla ^{dark red}	-
Pinus ponderosa n.e.	S.W. -9500		Gleditsia neoveboracensis	8000-9500
Pinus edulis	N.E. -7200		Prunus	-8400
" strobiliformis	N.E. 7200-10000		Crotaegus	7500
Pseudotsuga	S.W. -11000		Fraxina spiraea	7500-10000
Abies	N.E. 7000-9900		Ergerson	-12000
Picea	800-9500?		Solidago many species	
Juniperus pachyphloea	-7300		Aster	
" occidentalis	- "		Geranium	
Quercus lobed leaf	ns. 7500-7000		Pinus flexilis	-9900
" v. scrub	-7500		Pice subra	ns. 12400
			Peak -	12600. [11882]
Sambucus big	7800-9500		Silene acaulis?	12600
Spirea big	- "		Artemisia	"
Ribes mesochorensis	7500-9900		Orthocarpus	"
" l. irrigum?	" -8200		Sedum	"
Rhus trilobata	-7600		Allium	"
			Saxifraga	"
			Heilmann	"
			Ergerson	"
			Orthocarpus	"
			multiflor	"

Cystopteris ~~shaded~~ 9570

Muscifraga 12000

Anthus 12600

Myadestes 12000

Left horses 9900

Highest timber, N.E. 12200

Peak 3 P.M. 12600

Ribes oxycanthus 11000-12500

" sanguineum 12000

Back to creek -9200

Back to camp 7700

Sept. 14, Sunday

Sept. 15 - Camp 880, 7650

" Winfield 7400

Ruidoso 7300

~~Acro~~ Hards 6850

Juglans rupestris -7300

Rhus montana tricolor -7500

Atriplex canescens - "

Lunch - 2 mi. below Ruidoso, 6700

Pinus ponderosa N.E. 6700-

Yucca stricta S.W. -6700

Berberis " "

Opuntia arborescens SW. "

^{like arborescens} " "

Pinus bentzenyi 6450

Glenn 6450

Mesquite S.W. 6300

Rhus microphylla S.W. "

Pinus edulis N.E. 6300-

Juniper 2, " 6300-

Lipia S.W. -6000

Camp 30 mi. 6000

Tongue River S.W. "

Sept. 16 Camp, S 6000

Hards 1 mi. 6000

Pinus 6600

Lunch 5500

Left Hobbs R. 5400

Top of Mesa 5700

Dipodomys spec- " 5700

Camp

Sept. 17 Camp 5300

Roswell 4050

Out to Mr. Wilson's ranch.

Sept 21

Roswell 9:25 AM.

Pecos R.

Mosquito dwarf SW.

Larrea SW.

Zizyphus on banks

Atriplex canescens

Yucca stricta

Antirrhinum abn. plains & valley

Opuntia arborescens

~~*Antirrhinum*~~

Microtus

Dipodomys spectabilis

Edge of Plain - Campbell

Quercus - dwarf -

mainly *Yucca* *arborescens*

Elk

Kenna

Portales

Cameo

Herford

5 antelope

Don

Canyon City

9 antelope

Amarillo 7 P.M.

Sept 22 Amarillo 8 a.m.

Numenius - abn.

Sturnella "

Otocoris "

Longopus "

Buteo swainsoni com.

Falco mexicanus 1

Good crops of *Euphorbia*,
capp. corn,

Lepus melanotis

Wichitara

Claude

Goodnight

Mosquito in gulches

Andropogon abn.

9 elk in fine condition

apple, peach, locust

Milvulus forficatus com.

50 full blood

120 all told

Cow + calf photographed $\frac{2}{3}$

buffalo cow + nearly full blood ^{off}

3 quarters blood yearlings
photographed.

herd of full bloods

Amarillo

Loose

mosquito, abn.

Channing

Grass plains

Dalhart

Logan - dark

Sept. 23 Logan

Prosopis - abn. S.W. slope
 Mimosa (like biumefida)
 Dalma spec. - S.W.
 Psoralea " "
 Rhus microphylla " "
 " arborescens, both slopes
 Cirtis " on rocks
 Populus monilifera, by water
 Salix " "
 Juniperus N.E.
 Quercus glauca, both slopes
 Opuntia arborescens
 " leptocaulis S.W.
 Gutierrezia, everywhere
 Liatris,
 Verberna
 Eriogonum tall
 Solanum blue
 " yellow, prickly

Logan

Callipepla 47
 Quercus - reported
 Pipilo maculatus 1
 " chlorura 1
 Falco mex- 2
 Zenaidura
 Otocoris com-
 Longspurs "
 Lanius 1
 Salpinctes - yg. r. nest
 Tucumania
 Merganser, still com.

Passer domesticus

Jefferson, Tex.
Marshall "
Joaquin
Lufkin
Huntington
Rockland
Beaumont
Houston
San Antonio
Center Point
Kerrville
Rock Springs?
Juno?
Comstock
Pecos Bridge
Langtry
Valentine
Van Horn
Toyah
Roswell n.mex.
Amarillo
Goodnight

Sep. 24 - Santa Rosa, N.M.

^{monosperma}
Juniperus, juicy berry abn.
Pinus edulis "
Quercus grisea blue leaf, white oak
Ehretia
Populus monilifera
Prosopis juliflora S. slopes, com.
Mimosa biuncifera, com.
Salix formosa
Opuntia arborescens, com.
" leptocaulis "
" angustifolia, a few S.D.
" "vulgaris" com.
Cereus paucispinus
" "butter" o few
Mammillaria vivipara "
Yucca glauca, com.
" baccata? a few
Gutierrezia a abn.
Rhus aromatica com.
Mimosa borealis
Nolina texana
4000

Santa Rosa Sept. 24.

Cyanocaptes

Sturnella neglecta, com

Salpinctes

Petrochelidon nests

nest

Crotopomys

hills,

Perodipus holes & tracks

Neotoma

abu.

Spermophilus grammurus com.

Cynomys

Fiber

common

Lepus

tracks

"

collected

Neotoma

tracks.

8 Am
Sept. 25, Left Santa Rosa
Calliphs
Migrants - all along
Tucumanesi

Jugum

Saltair

Jugum

no migrants on river

short grass plains

Liberal

Cinderas

no migrants

Big meadows, Tules,
sloughs

Muskrat houses

Perodipus

Sand dunes

lots of hay,

good ranches

meade - dark

Sept. 24 Topeka daylight
Kansas City
Chicago 12:40 PM.

Sept. 24

Chicago

10:10 AM.

10:00

Tupelo, Ohio 3:30
Telegrams



8 Am
Sept. 25th Left Santa Rosa
Callipella
Maggots - all along
Tucumanesi

Sogara

Sathard

Guaymas

no mosquitos on leaves

short grass plains

Liberal

Cimarron

no mosquitos

Rio Grande, Tules,

stumps

the houses

Peru no

Sand dunes

lots of hay,

good ranches

meade - dark

Sept. 24 Topeka daylight
Kansas City
Chicago 12:40 P.M.

Sept. 27

Chicago

10:30 AM.

10:00

Defiance, Ohio 3:30
Telegraph

Plant Catalogue 100

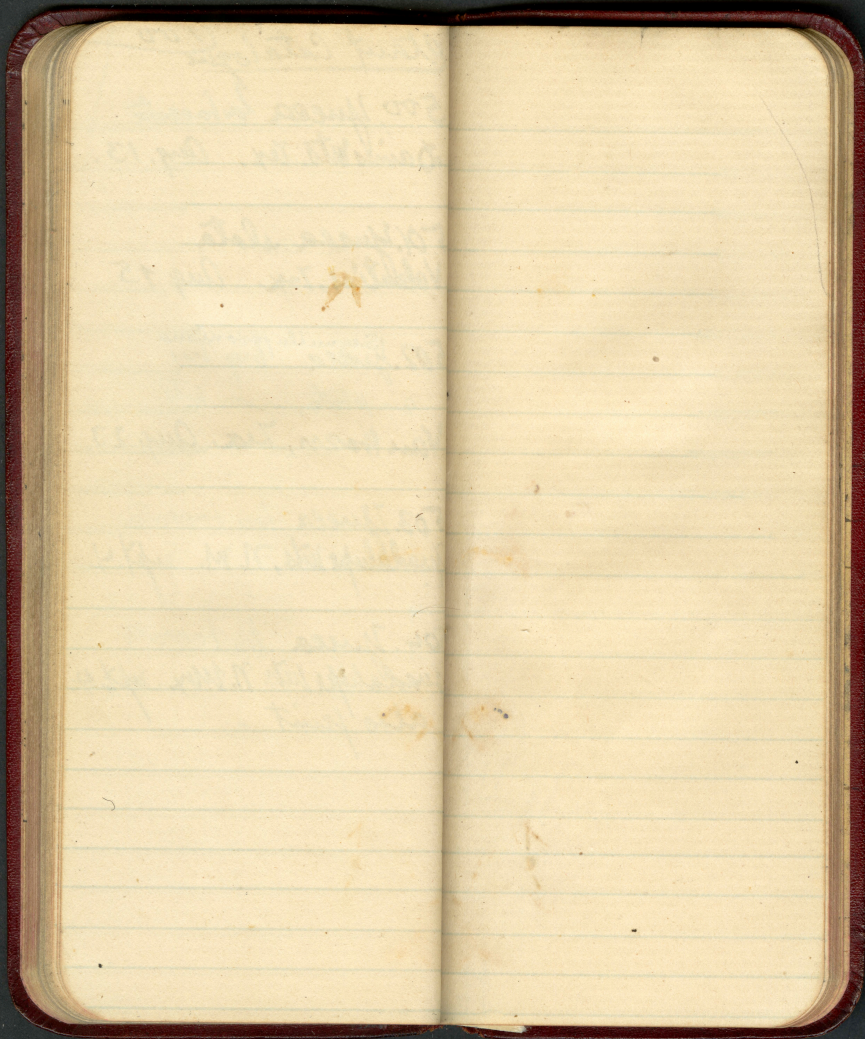
500. *Yucca laevis*
Davis Mts. Tex. Aug. 13.

501. *Yucca elata*
Valeritas, Tex. Aug. 15

502. *Semmlia parsoniana*
~~*Yucca*~~ Aug. 15
in photo, on mts.
Van Horn, Tex. Aug. 23.

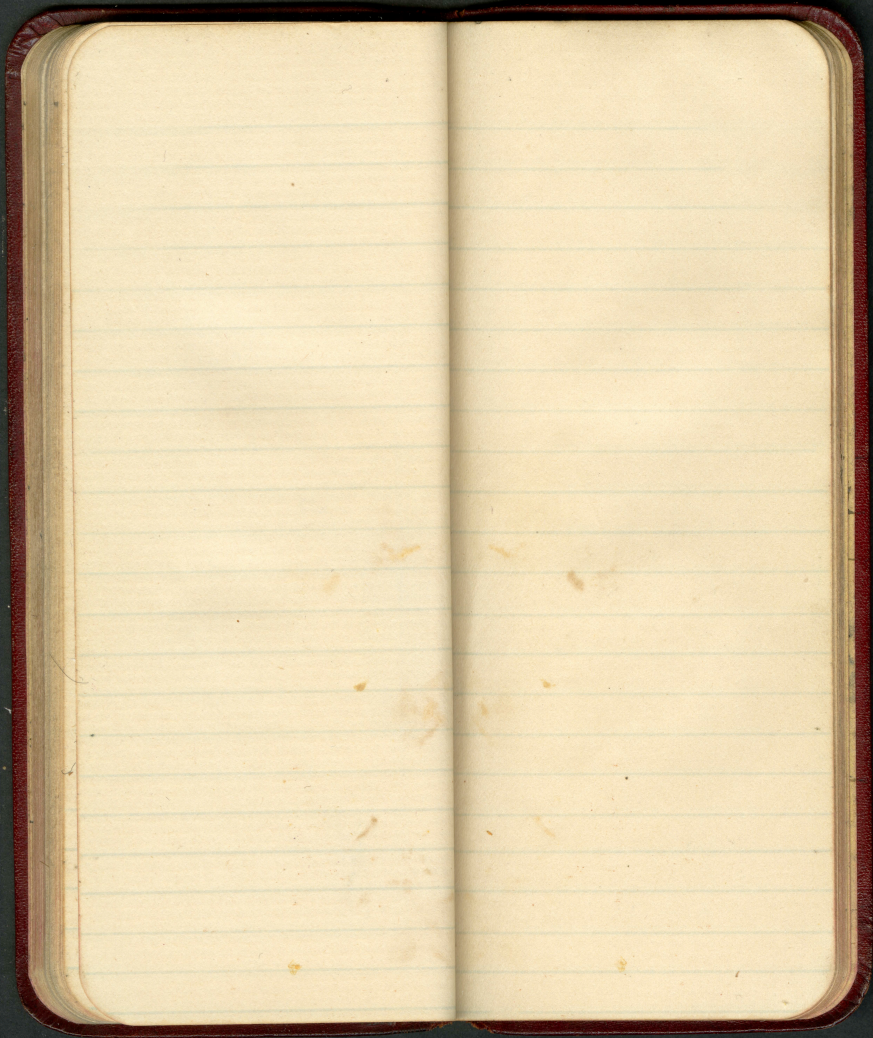
503. *Yucca laevis*
Guadalupe Mts., N. M. Sept. 4.

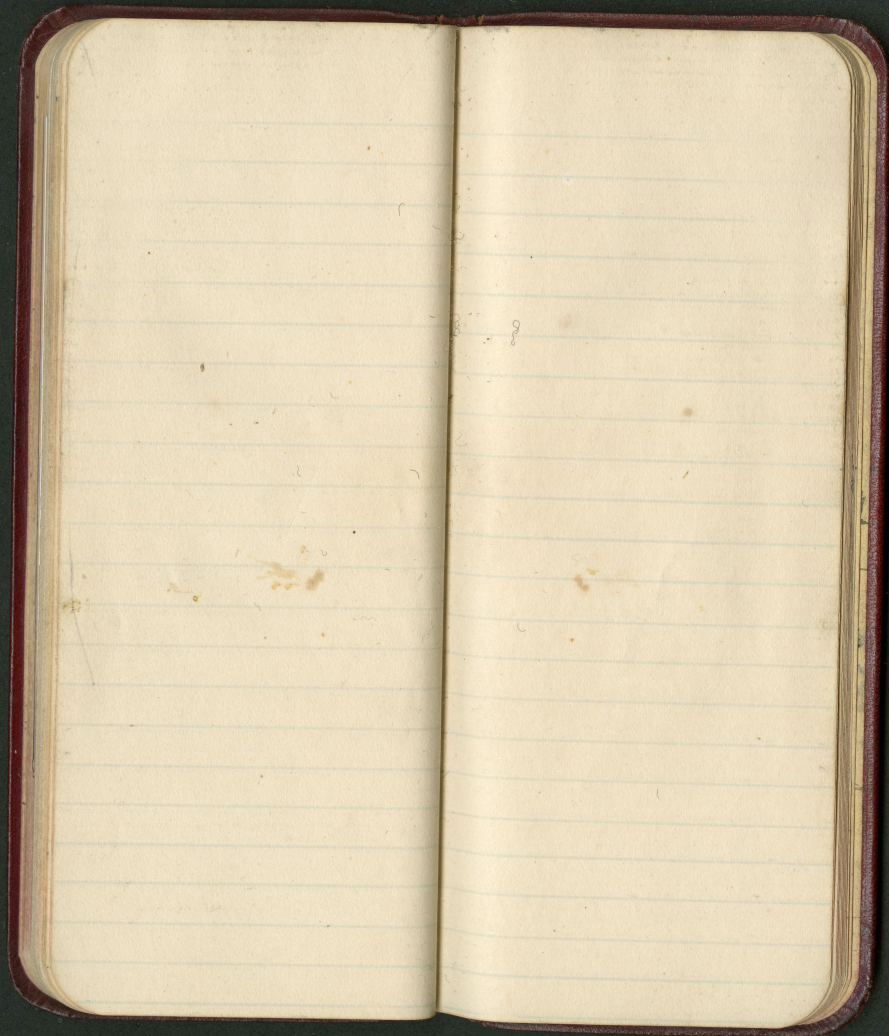
504. *Yucca laevis*
Guadalupe Mts. N. Mex. Sept. 4.
also print -

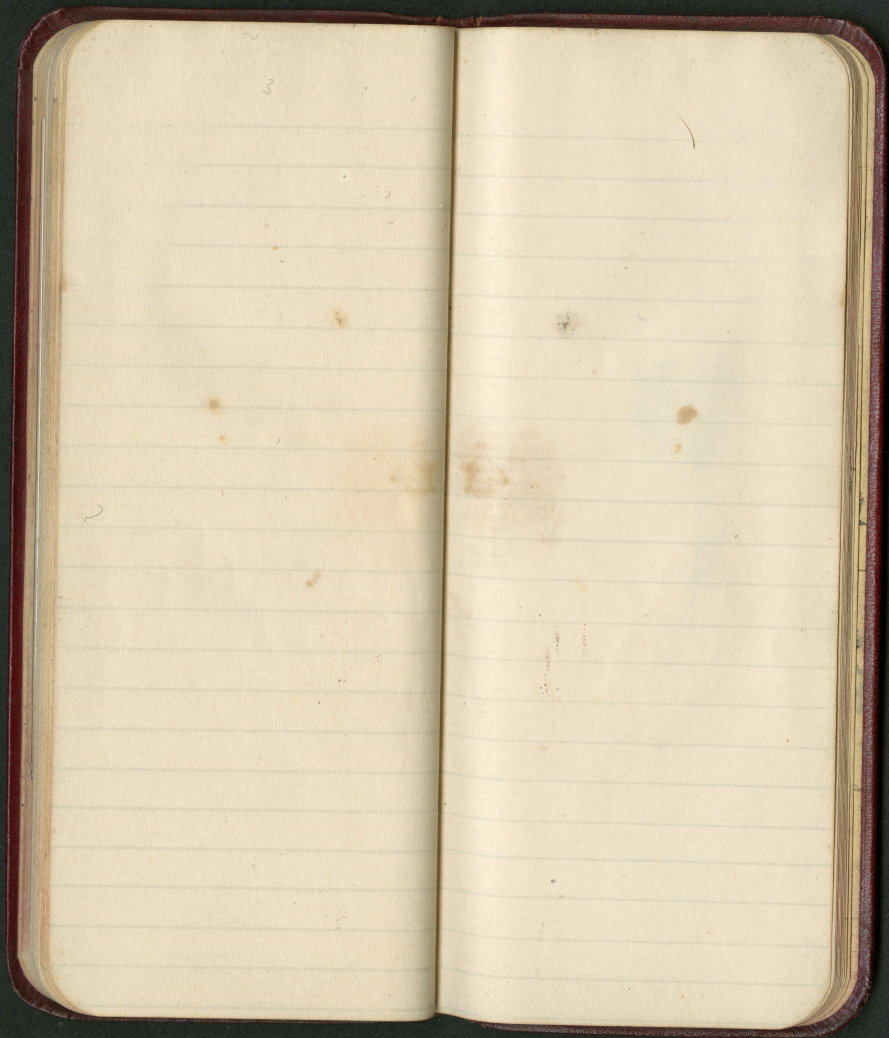






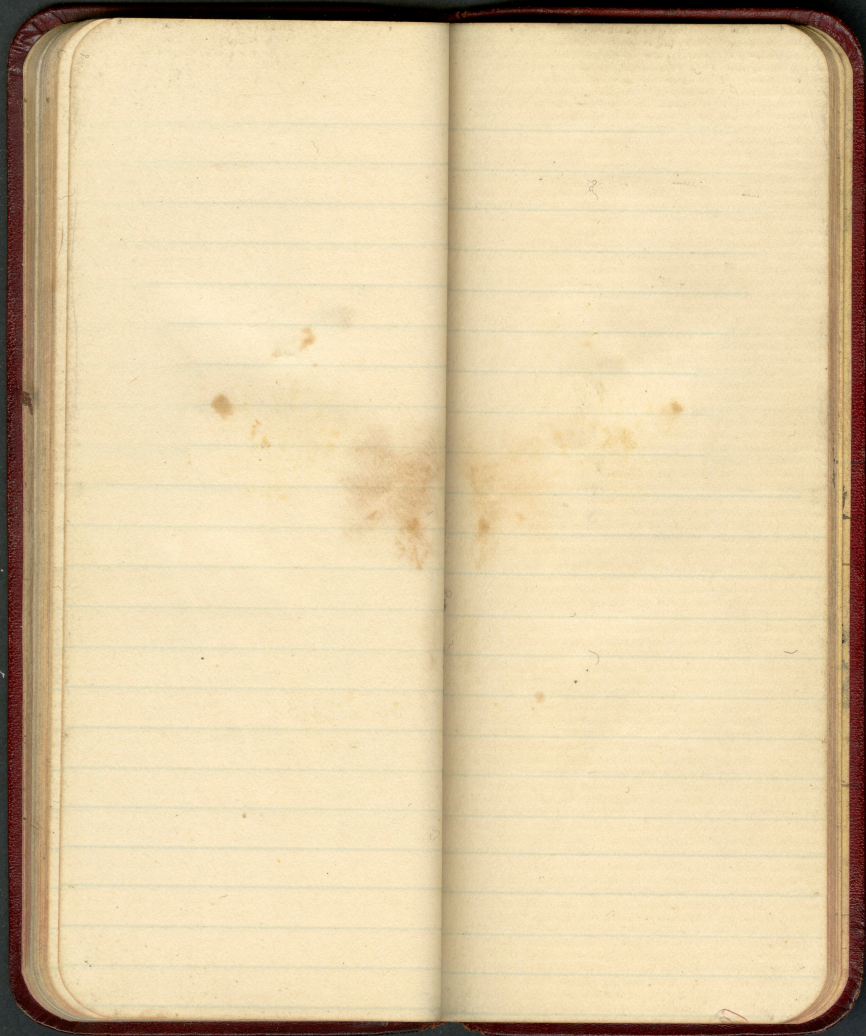












Welch Rabbit for 4.

one pound cheese, grated
or sliced thin.

Small cup of milk, boil,
then put in lump of butter,
some flour & water, one egg,
stir well & then put in
the cheese & melt.

Add mustard & a few
drops of Tabasco sauce
serve on toast.

Pagan Indians

White Calf - chief

Brocket

Little Plume

Red Calf

Cream Antelope

Transportation orders

Washingt. to Jefferson 93.50

Jefferson to San Antonio 8.75

San Antonio to Center Point 1.80

Center Point to Valeritas 6.80

Valeritas to El Paso 4.80

El Paso to Goodnight 8.50

Goodnight to Salt Lake 4.05

Salt Lake to Logan 2.40

Logan to Washington 48.60

120.20

Reimbursed

June \$ 58.49

July 155.96

Aug. 149.15

Sept. 126.84

487.44

120.20

total

607.64

E. S. Rogers, Stacyville, Me.

J. L. James, Ft. Davis, Tex.

M. A. Ernst, Boquillas, Tex.

F. L. Kelley - Tolo - White St. Austin.

Joseph Sitters, Boquillas, Tex.

H. W. Reynolds, Alpino, Tex.

R. H. Wright, Carlsbad.

W. M. Mc Ewan, "

Albert Gonzales, Yalita

D. B. HUMPHREYS

Cumshaw, Ingram, Tex.

H. L. Wade, Rock Springs

J. S. Gething "map - Tex.

H. F. Hiesher, Buckhorn Saloon
Rock Springs, Texas.

John Seawell, Constock
Trapper & Fisher

E. B. Davis, at High Bridge,
Langtry

Texas map to both -
Texas fish to Seawell

C. O. Finley & family
Zora 81
Florence 6
Edwin 7

Mrs. Holm 416. megaffin Ave.

Rev. J. M. Sedgwick, Toyah, Tex.

A. S. Cox, Van Horn, ^{P.M.}

D. B. Humphreys, Van Horn, Agent.

James A. Carroll - Agent
Crop zones ^{Miscellaneous, N.W.}

C. W. Winfield, Ruidoso -

Charles Brewmont Roswell

W. L. Busse, Logan, N. M.
for Burrage

June, 1902.

S	M	T	W	T	F
1	2	3	4	5	6
8	9	10	11	12	13
15	16	17	18	19	20
22	23	24	25	26	27
29	30

July, 1902.

S	M	T	W	T	F	S
1	2	3	4	5	6	7
9	10	11	12	13	14	15
16	17	18	19	20	21	22
23	24	25	26	27	28	29
30

August, 1902.

S	M	T	W	T	F
...	1
3	4	5	6	7	8
10	11	12	13	14	15
17	18	19	20	21	22
24	25	26	27	28	29
31

S	M	T	W	T	F	S
1	2	3	4	5	6	7
9	10	11	12	13	14	15
16	17	18	19	20	21	22
23	24	25	26	27	28	29
30

Quatman 255 x 70 x 34

Wagon 115 350 x 125 x 34

Coyle 9 112 x 43 x 34 x 180

Lea 8 350 x 50 x 84

Earl Walker, Santa Rosa, Tex.

Mrs. M. E. M. S. Bennett
or Liberal, Kansas

J. H. Beach, Van Horn, Tex.

Obstetrical 1505, Horg

Goldman 218, 5

3313, N. Judd

809-1218, N.W.

L. J. Goldman.
Berkeley, 2314, Pine St.

