



## Album 1 Panama, 1960

This [document](#) is provided by the [Smithsonian Institution Archives](#). We welcome you to use it for personal and educational uses. For commercial uses, please contact [osiaref@si.edu](mailto:osiaref@si.edu).

### Please cite as –

Short citation:

Smithsonian Institution Archives, Record Unit 7006, SIA\_007006\_B192\_AI01

Long citation:

Smithsonian Institution Archives, Record Unit 7006, Wetmore, Alexander, “Album 1 Panama, 1960”, SIA\_007006\_B192\_AI01, [http://siarchives.si.edu/collections/fbr\\_item\\_modsi434](http://siarchives.si.edu/collections/fbr_item_modsi434)

When citing our collections online, please link to the Smithsonian Institution Archives <http://siarchives.si.edu>.





.8046. Río Frijoles, above  
Smithsonian tract, near  
Gamboa, C. Z.  
January 13, 1960



.8047. Río Frijoles, above  
Smithsonian tract, near  
Gamboa, C. Z.  
January 13, 1960





8048. Río Frijoles, above  
Smithsonian tract, above  
Gamboa, C. Z.  
January 13, 1960



8049. Launch Barbara II, at  
anchor at Balboa Yacht Club.  
Cerro Galera in far distance.  
Balboa, C. Z.  
January 16, 1960.





8050. Left to right, Isla  
Pachequilla, Isla Pacheca,  
Pearl Islands, Panamá.  
January 16, 1960.



8051. Left to right, Isla  
Pachequilla, Isla Pacheca,  
Pearl Islands, Panamá.  
January 16, 1960.





8052. Isla Pacheca, Pearl  
Islands, Panamá.  
January 16, 1960.



8053. Isla Pachequilla,  
Pearl Islands, Panamá.  
January 16, 1960.





8054. Isla Bartolomé, Pearl  
Islands, Panamá.  
January 16, 1960.



8055. Barbara II at anchor  
off Isla Chaperá. In back-  
ground left to right. Islas  
Saboga, Pacheca (in center),  
Contadora, Pearl Islands,  
Panamá.  
January 18, 1960.





.8056. Left to right, Islas Saboga, Pacheca, and Contadora, from Isla Chapera. Pearl Islands, Panamá. January 18, 1960.



.8057. Beach on western side of Isla Chapera, Pearl Islands, Panamá. January 18, 1960.





8058. Dry season water  
holes in rock near summit  
of Isla Chapera, where birds  
find their only water supply  
in dry season. Pearl Islands,  
Panamá.  
January 18, 1960.



8059. Bocas Hinds on the  
beach at Isla Chapera.  
Pearl Islands, Panamá.  
January 18, 1960.





8060. Bocas Hinds on the  
beach at Isla Chaperera, Pearl  
Islands, Panamá.  
January 18, 1960.



8061. Isla Contadora from  
the south. Pearl Islands,  
Panamá.  
January 18, 1960.





8062. Shore opposite our anchorage at southeastern side of Isla Saboga. Pearl Islands, Panamá. January 18, 1960.

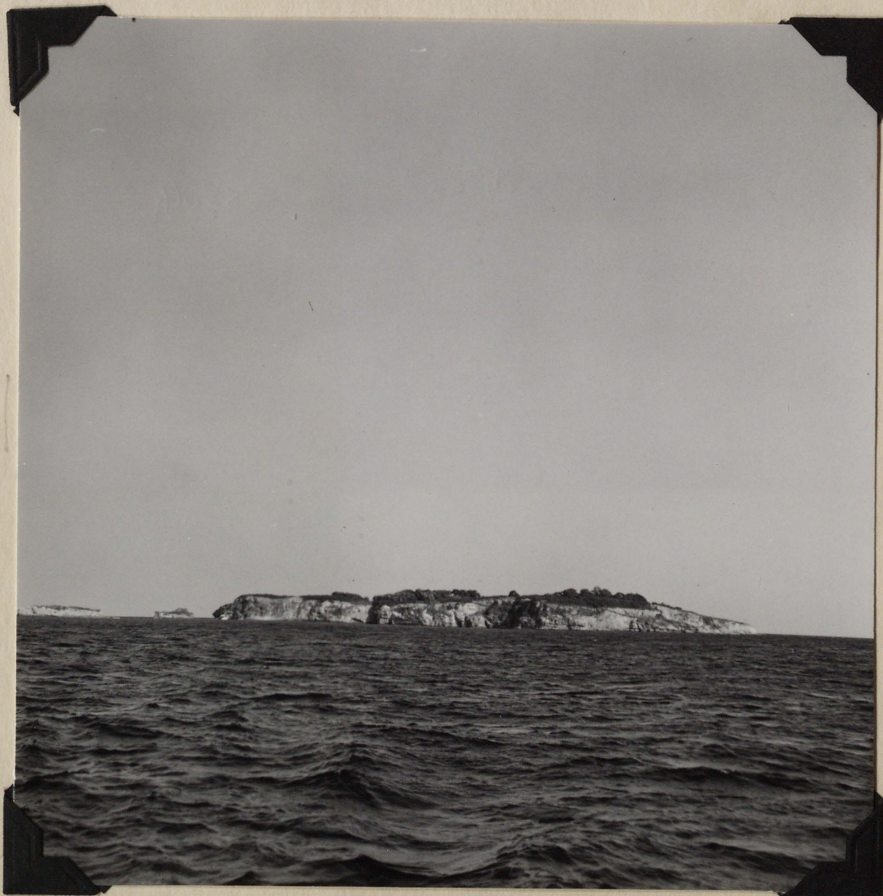


8063. Village of Saboga, Isla Saboga, Pearl Islands, Panamá. January 20, 1960.





8064. Frank Violette's launch  
Ciri, at Isla Pacheca. Isla  
Pachequilla at left. Pearl  
Islands, Panamá.  
January 20, 1960.



8065. Isla Pacheca, from  
the south. Pearl Islands,  
Panamá.  
January 20, 1960.





8066. Beach on south side  
of Isla Cañas, Pearl Islands,  
Panamá.  
January 21, 1960.



8067. On Isla Cañas, Pearl  
Islands, Panamá.  
January 21, 1960.





8068. On Isla Cañas,  
Pearl Islands, Panamá.  
January 21, 1960.



8069. Beach at Isla Cañas,  
Pearl Islands, Panamá.  
January 21, 1960.





8070. At Isla Cañas,  
Pearl Islands, Panamá.  
January 21, 1960.



8071. At Isla Cañas,  
Pearl Islands, Panamá.  
January 20, 1960.





8072. Shore of Isla del  
Rey at mouth of Río Cacique,  
Pearl Islands, Panamá.  
January 27, 1960.



8073. South side of Isla  
Santelmo, Isla del Rey at  
left. Pearl Islands, Panamá.  
January 28, 1960.





.8074. Northern half of  
east shore of Isla Galera,  
Pearl Islands, Panamá.  
January 28, 1960.



'8075. Southern half of  
eastern shore of Isla Galera,  
Pearl Islands, Panamá.  
January 28, 1960.





· 8076. Isla Galera from the  
southeast. Pearl Islands,  
Panamá.  
January 28, 1960.



\* 8077. Eastern end of Isla  
Galera from the south.  
Pearl Islands, Panamá.  
January 28, 1960.  
Brown boobies in air.





.8078. Cliff on southern  
side of Isla Galera. Brown  
Boobies in air.  
Pearl Islands, Panamá.  
January 28, 1960.



' 8079. Punta de Cocos, on  
southern tip of Isla del  
Rey, Pearl Islands, Panamá.  
January 28, 1960.





8080. Isla Morena from the  
South. Pearl Islands, Panamá.  
January 28, 1960.



8081. Isla Casaya from the  
south. Pearl Islands,  
Panamá.  
January 28, 1960.





8082. Isleta Málaga,  
Pearl Islands, Panamá.  
January 29, 1960.



8083. Isleta Málaga,  
Pearl Islands, Panamá.  
January 29, 1960.





8084. Isleta Málaga,  
Pearl Islands, Panamá.  
January 29, 1960.



8085. Isleta Málaga,  
Pearl Islands, Panamá.  
January 29, 1960.





8086. Barbara II at anchor  
between Isleta Málaga and  
Isla La Vivienda, Pearl  
Islands, Panamá.  
January 29, 1960.



8087. Isleta Málaga,  
Pearl Islands, Panamá.  
January 29, 1960.





8088. Bocas Hinds with  
oystercatcher, Isleta Málaga,  
Pearl Islands, Panamá.  
January 29, 1960.



8089. Low tide between  
Isleta Málaga (left) and  
Isla Bayoneta.  
Pearl Islands, Panamá.  
January 29, 1960.





8090. William Bailey in  
the panga, Isleta Málaga,  
Pearl Islands, Panamá.  
January 29, 1960.



8091. Bocas Hinds at Isleta  
Málaga, Pearl Islands,  
Panamá.  
January 29, 1960.





8092. Low tide on southern  
shore of Isla Bayoneta,  
Barbará II at anchor.  
Pearl Islands, Panamá.  
January 30, 1960.



8093. Southern shore of  
Isla Bayoneta; at left,  
Isla Pedro González, Isla  
Señorita and Isla Señora.  
Pearl Islands, Panamá.  
January 30, 1960.





8094. Growth of cactus on  
rock on shore of Isla Bayoneta.  
Pearl Islands, Panamá.  
January 30, 1960.



8095. Low tide on south  
shore of Isla Bayoneta, Pearl  
Islands, Panamá.  
January 30, 1960.





8096. Low tide on south shore  
of Isla Bayoneta. Isla Pedro  
González in distance. Pearl  
Islands, Panamá.  
January 30, 1960.



8097. South shore of Isla  
Bayoneta, Pearl Islands,  
Panamá.  
January 30, 1960.



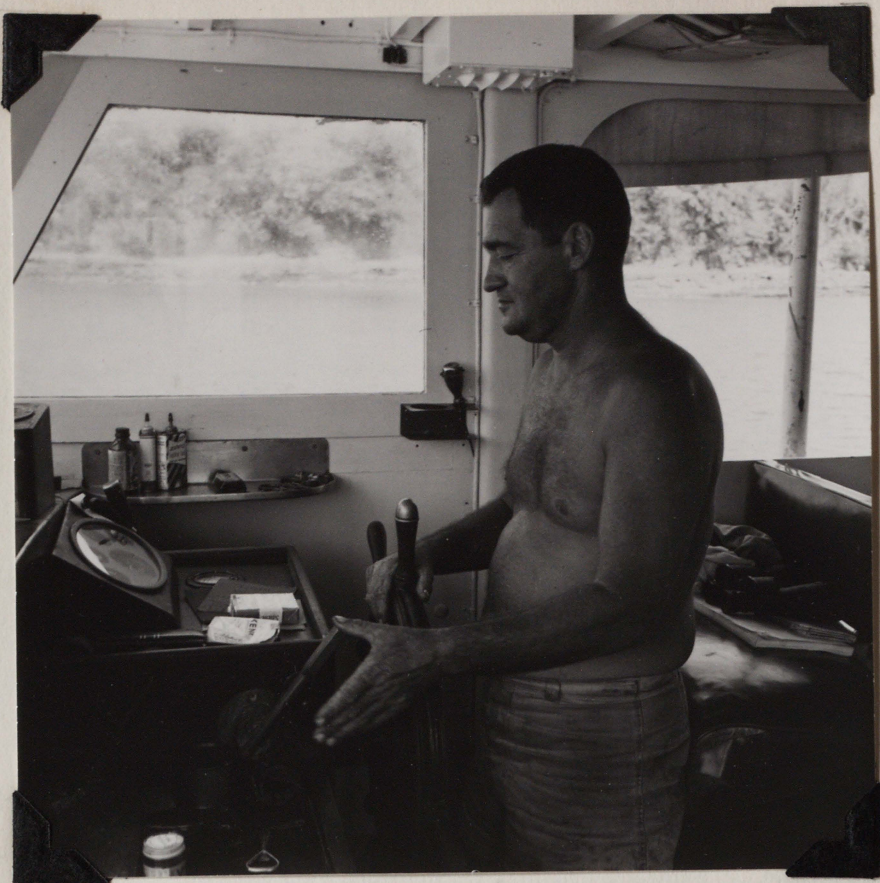


8098. South shore of Isla  
Bayoneta, Pearl Islands, Panamá.  
January 30, 1960.

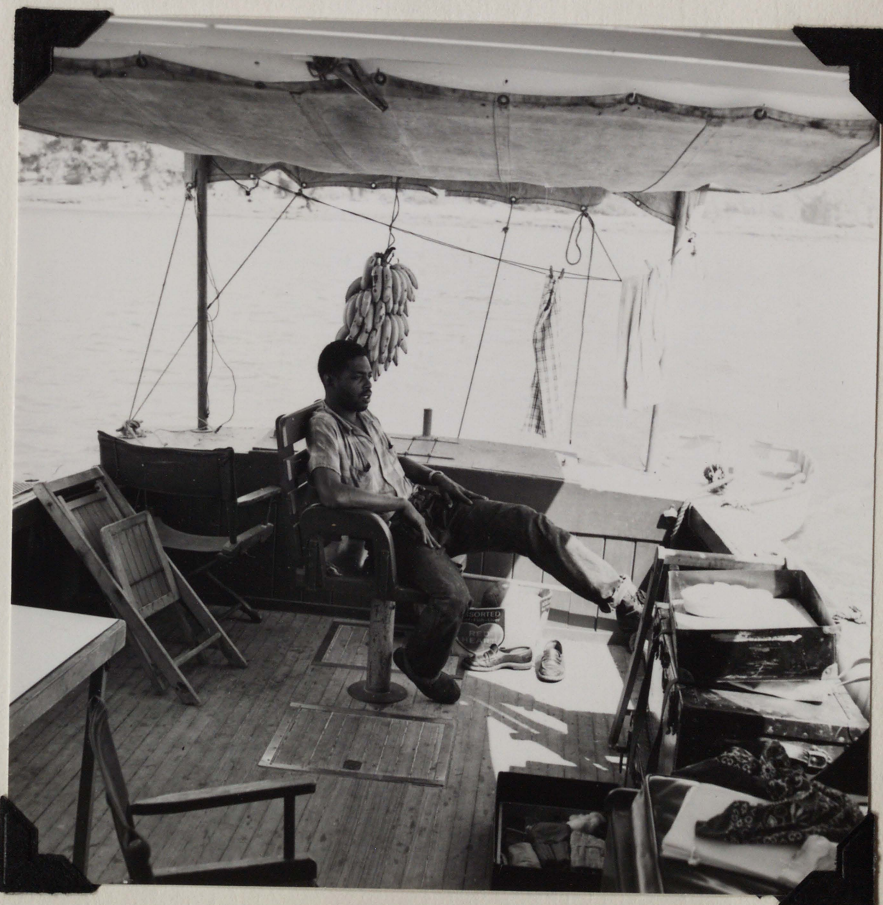


8099. Isla Pedro González  
with the small islands  
Señorita and Señora showing  
at right. Pearl Islands,  
Panamá.  
January 30, 1960.



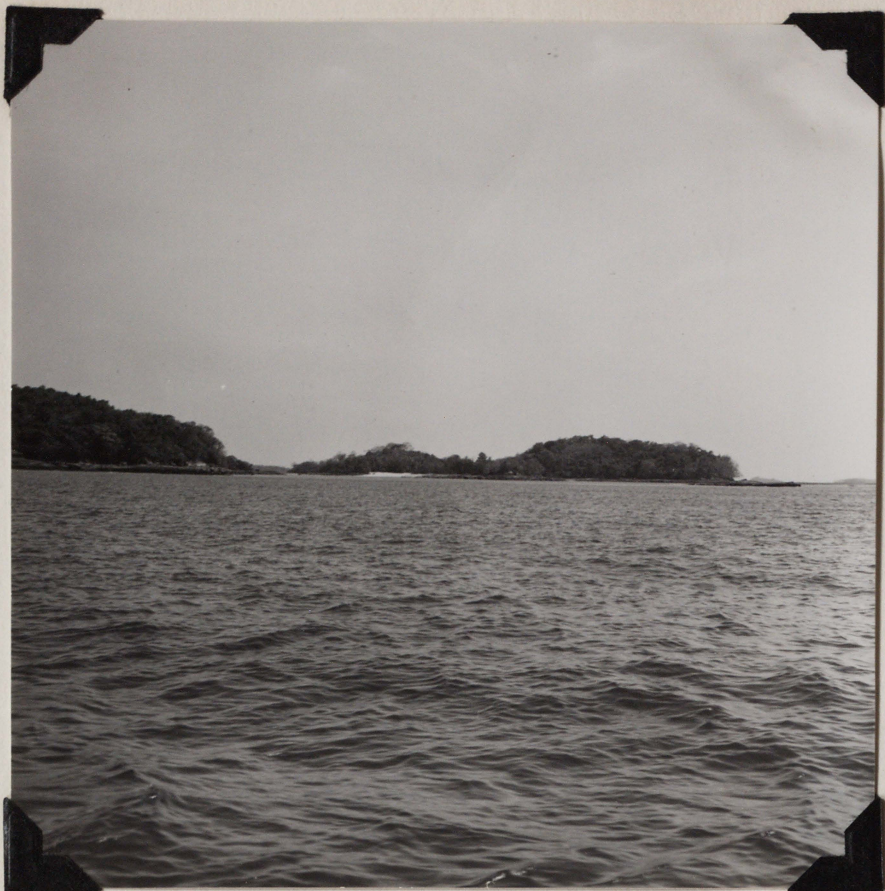


8100. George Edginton, skipper  
and owner of the Barbara II.  
Isla Bayoneta, Pearl Islands,  
Panamá.  
January 30, 1960.



8101. Bocas Hinds, on the  
Barbara II, off Isla Bayoneta,  
Pearl Islands, Panamá.  
January 30, 1960.





8102. Isla Bayoneta at left,  
Isla La Vivienda at right.  
Pearl Islands, Panamá.  
January 30, 1960.



8103. Sailing cayuco off  
Isleta Málaga, Pearl Islands,  
Panamá.  
January 30, 1960.





.8104. Sailing cayuco, off  
Isleta Málaga, Pearl Islands,  
Panamá.  
January 30, 1960.



8105. Sailing cayuco off  
Isleta Málaga, Pearl Islands,  
Panamá.  
January 30, 1960.





8106. Cayucos off Isleta  
Málaga, Pearl Islands, Panamá.  
January 30, 1960.



8107. Isla La Vivienda and  
at right end of Isla Bayoneta.  
Pearl Islands, Panamá.  
January 31, 1960.





8108. Eastern end of Isleta  
Málaga, Pearl Islands, Panamá.  
January 31, 1960.



8109. Eastern side of  
Isleta Málaga, Pearl Islands,  
Panamá.  
January 31, 1960.





.8110. Left to right islas  
Pedro González, Señorita, Señora,  
and Bayoneta. Pearl Islands,  
Panamá.  
January 31, 1960.



.8111. Isla Flamenco, off  
the canal entrance. Canal  
Zone.  
January 31, 1960.





'8112. Left to right Isla  
Perico, Isla Flemenco at  
canal entrance.  
January 31, 1960.



.8113. Isla Culebra (left),  
Isla Naos (right). Canal  
Zone.  
January 31, 1960.





8114. Isla Culebra, Canal Zone.  
January 31, 1960.



8114a. Roadside luncheon on  
the Coclé Plains, near Antón.  
February 4, 1960.





8115. Luncheon on the road  
near Antón, Coclé.  
February 4, 1960.



8116. Enrique Castellón  
and children.  
Soná, Veraguas.  
February 5, 1960.





8117. Bea with Enrique  
Castrellón and family.  
February 5, 1960.



8118. The Castrellón home.  
Soná, Veraguas.  
February 5, 1960.





8119. The Castellón home.  
Soná, Veraguas.  
February 5, 1960.



8120. Gedón Hartmann and  
the little guest cabin.  
Santa Clara, Chiriquí.  
February 7, 1960.





8121. Alois Hartmann and  
Dr. Frank Hartman.  
Santa Clara, Chiriquí.  
February 7, 1960.



8122. The Alois Hartmann  
home, Santa Clara, Chiriquí.  
February 7, 1960.





8123. The Alois Hartmann  
home, Santa Clara, Chiriquí.  
February 7, 1960.



8124. At the Hartmann finca.  
Santa Clara, Chiriquí.  
February 7, 1960.





8125. At the Hartmann finca.  
Gedón at right.  
Santa Clara, Chiriquí.  
February 7, 1960.

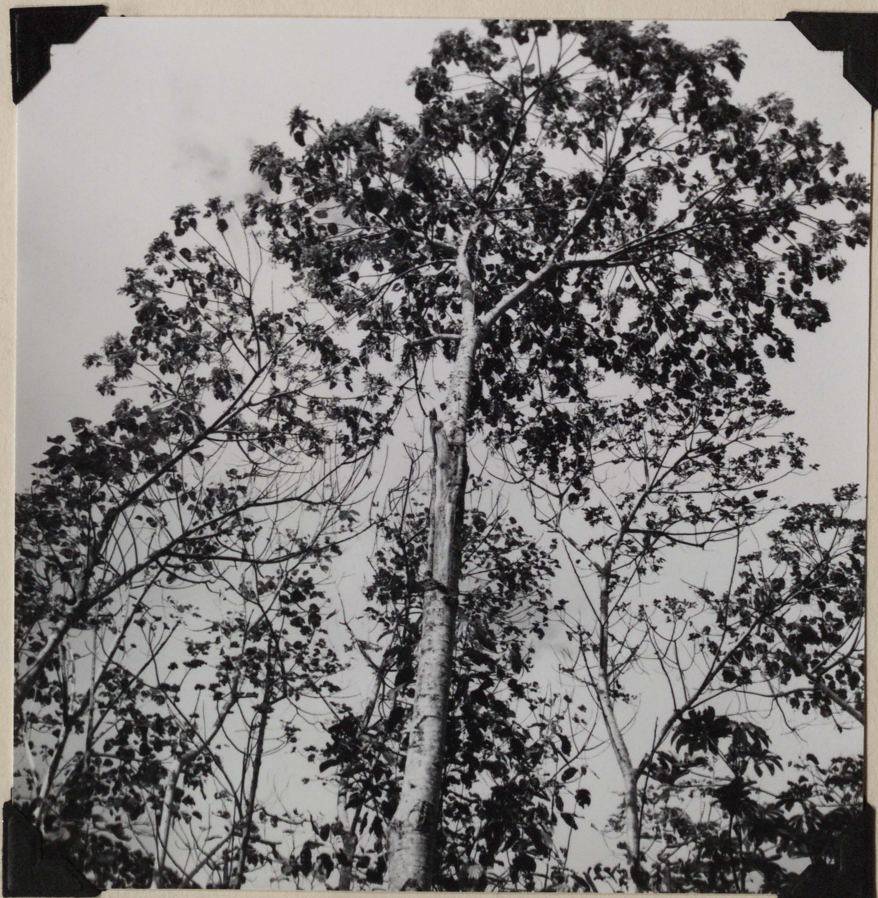


8126. Nyctibius griseus on  
egg.  
Santa Clara, Chiriquí.  
February 7, 1960.





8127. Nyctibius griseus  
on egg. Santa Clara, Chiriquí.  
February 7, 1960.



8128. Nyctibius griseus on  
egg. Santa Clara, Chiriquí.  
February 7, 1960.





'8129. Ratibor Hartmann's  
finca. Santa Clara, Chiriquí.  
February 7, 1960.

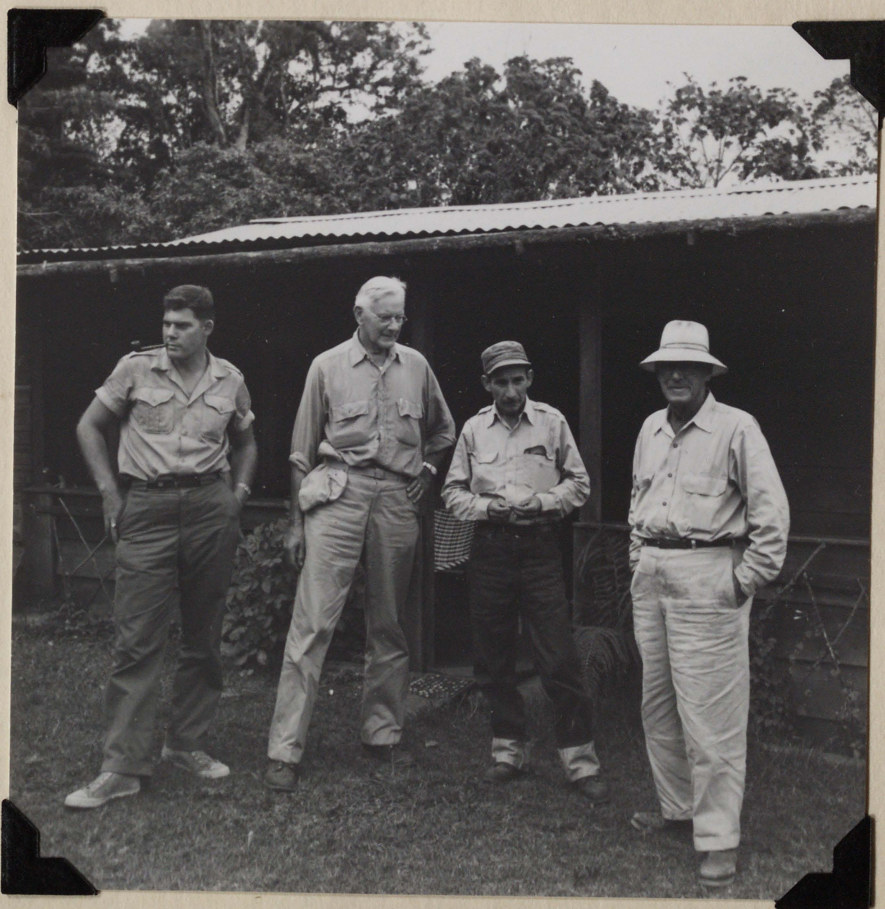


'8130. Ratibor Hartmann's  
finca, Santa Clara, Chiriquí.  
February 7, 1960.





8131. At Ratibor Hartmann's  
finca. Santa Clara, Chiriquí.  
February 7, 1960.



8132. Neal, A. Wetmore,  
Ratibor Hartmann, Pablo  
Brackney.  
Santa Clara, Chiriquí.  
February 7, 1960.





8133. At Ratibor Hartmann's  
finca. Santa Clara, Chiriquí.  
February 7, 1960.



8134. Ratibor Hartmann.  
Santa Clara, Chiriquí.  
February 7, 1960.





'8135. Volcán Barú at sunrise  
from Palo Santo, Chiriquí.  
February 12, 1960.



'8136. The large lake, El  
Volcán, Chiriquí.  
February 12, 1960.





.8137. Cerro Picacho from  
the large lake, El Volcán,  
Chiriquí.  
February 12, 1960.



8138. The large lake,  
El Volcán, Chiriquí.  
February 12, 1960.





8139. The large lake,  
El Volcán, Chiriquí.  
February 12, 1960.



8140. Volcán Barú from  
near the small lake.  
El Volcán, Chiriquí.  
February 12, 1960.





8141. Trail at Tisingal,  
El Volcán, Chiriquí.  
February 13, 1960.



8142. Eustorgio Méndez  
at left, Tisingal, El  
Volcán, Chiriquí.  
February 13, 1960.





8143. My "helper" (temporary).  
El Volcán, Chiriquí.  
February 13, 1960.



8144. Rosita, Pablo  
Brackney, Julio, Palo  
Santo, Chiriquí.  
February 13, 1960.





8145. Least Grebes on the  
pond at Palo Santo, Chiriquí.  
February 13, 1960.



8146. Least Grebes on the  
pond at Palo Santo, Chiriquí.  
February 13, 1960.





8147. View at Barriles,  
Chiriquí.  
February 17, 1960.



8148. Quebrada Barriles,  
Chiriquí.  
February 17, 1960.





8149. Edna Hartmann and  
Eustorgio Méndez at Palo  
Santo, Chiriquí.  
February 17, 1960.



8150. Volcán Barú from  
Palo Santo, Chiriquí.  
February 17, 1960.





8151. The Llanos at 6100  
feet. El Volcán, Chiriquí.  
February 18, 1960.



8152. The Llanos at 6100  
feet. El Volcán, Chiriquí.  
February 18, 1960.





8153. On the slopes of  
the volcano at 6400 feet.  
El Volcán, Chiriquí.  
February 18, 1960.



8154. Slopes of Barú at  
6400 feet.  
El Volcán, Chiriquí.  
February 18, 1960.



8156. Slopes of Barú at  
6400 feet.  
El Volcán, Chiriquí.  
February 18, 1960.







8157. Upper end of the  
lava flow at 6000 feet.  
El Volcán, Chiriquí.  
February 18, 1960.



8158. Distant view of El  
Volcán, Chiriquí, from  
the road across the lava  
flow.  
February 18, 1960.





8159. Removing a tree  
fallen across the road at  
the lakes.  
El Volcán, Chiriquí.  
February 19, 1960.



8160. Eustorgio Méndez at  
the large lake.  
El Volcán, Chiriquí.  
February 19, 1960.





8161. The jeep station wagon.  
Ramón, Eustorgio, Neal. The  
lakes, El Volcán, Chiriquí.  
February 19, 1960.



8162. The jeep at the  
lakes, Dr. Frank Hartman  
at right. El Volcán,  
Chiriquí.  
February 19, 1960.





8163. Ramón, Eustorgio,  
Neel, Frank Hartman at the  
lakes.  
El Volcán, Chiriquí.  
February 19, 1960.



8164. Gedón Hartmann,  
Eustorgio, Ramón.  
Palo Santo, Chiriquí.  
February 19, 1960.





8165. Volcán Barú at dawn  
from Palo Santo, Chiriquí.  
February 23, 1960.



8166. Volcán Barú at dawn  
from Palo Santo, Chiriquí.  
February 23, 1960.





8167. Barú from Rodriguez  
potrero, Cerro Punta, Chiriquí.  
February 25, 1960.

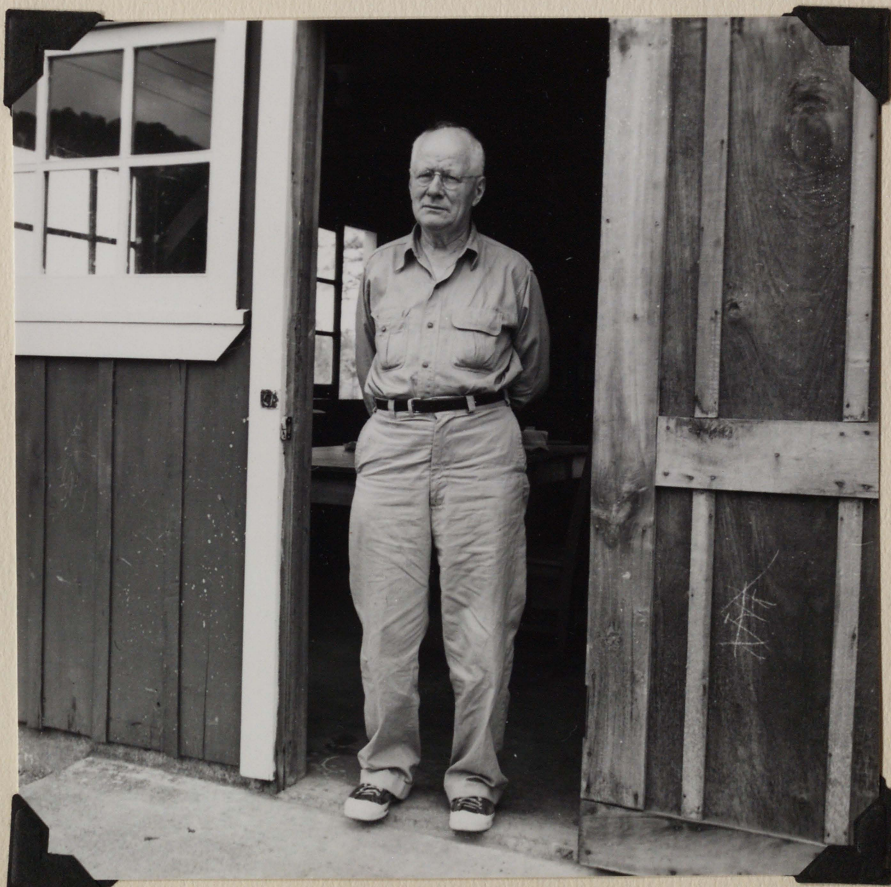


8168. Trail marker above  
Cerro Punta, Chiriquí.  
February 25, 1960.





8169. Río Chiriquí Viejo  
at Cerro Punta, Chiriquí.  
February 25, 1960.



8170. Dr. Frank Hartman at  
Palo Santo, Chiriquí.  
February 28, 1960.





8171. Pablo Brackney's house  
at Palo Santo, Chiriquí.  
February 28, 1960.



8172. Brackney's house at  
Palo Santo, Chiriquí.  
February 28, 1960.





8173. Brackney's house at  
Palo Santo, Chiriquí.  
February 28, 1960.



8174. The pond at Palo  
Santo, Chiriquí.  
February 28, 1960.





8175. Brackney's house at  
Palo Santo, Chiriquí.  
February 28, 1960.



8176. Pablo, Julio and Bea.  
Palo Santo, Chiriquí.  
February 28, 1960.





8177. Volcán Barú from  
Buena Vista, Chiriquí.  
February 29, 1960.



8178. Volcán Barú from  
Buena Vista, Chiriquí.  
February 29, 1960.





8179. Bea in the kitchen  
window, Buena Vista, Chiriquí.  
February 29, 1960.



8180. Volcán Barú from  
Buena Vista, Chiriquí.  
February 29, 1960.





8181. The pastures behind  
our house at Buena Vista,  
Chiriquí.  
February 29, 1960.



8182. Cerro Picacho and  
part of Barú from Buena  
Vista, Chiriquí.  
March 7, 1960.





8183. Volcán Barú from  
Buena Vista, Chiriquí.  
March 7, 1960.



8184. Picacho and Barú  
from Buena Vista, Chiriquí.  
March 7, 1960.





8185. View across the pastures  
at Buena Vista, Chiriquí.  
March 7, 1960.



8186. Eustorgio at the  
skinning table.  
Buena Vista, Chiriquí.  
March 7, 1960.





8187. Our house at Buena  
Vista, Chiriquí.  
March 9, 1960.



8188. Our house at  
Buena Vista, Chiriquí.  
March 9, 1960.





8189. From our front porch  
at Buena Vista, Chiriquí.  
March 9, 1960.



8190. Roble in blossom,  
at our house.  
Buena Vista, Chiriquí.  
March 9, 1960.





8191. The work table at  
Buena Vista, Chiriquí.  
March 9, 1960.



8192. From our front porch  
at Buena Vista, Chiriquí.  
March 9, 1960.





8193. Cerro Picacho from  
above Buena Vista, Chiriquí.  
March 11, 1960.



8194. Near the headwaters  
of the Río Escárrea.  
Buena Vista, Chiriquí.  
March 11, 1960.





8195. Near Buena Vista,  
Chiriquí.  
March 11, 1960.

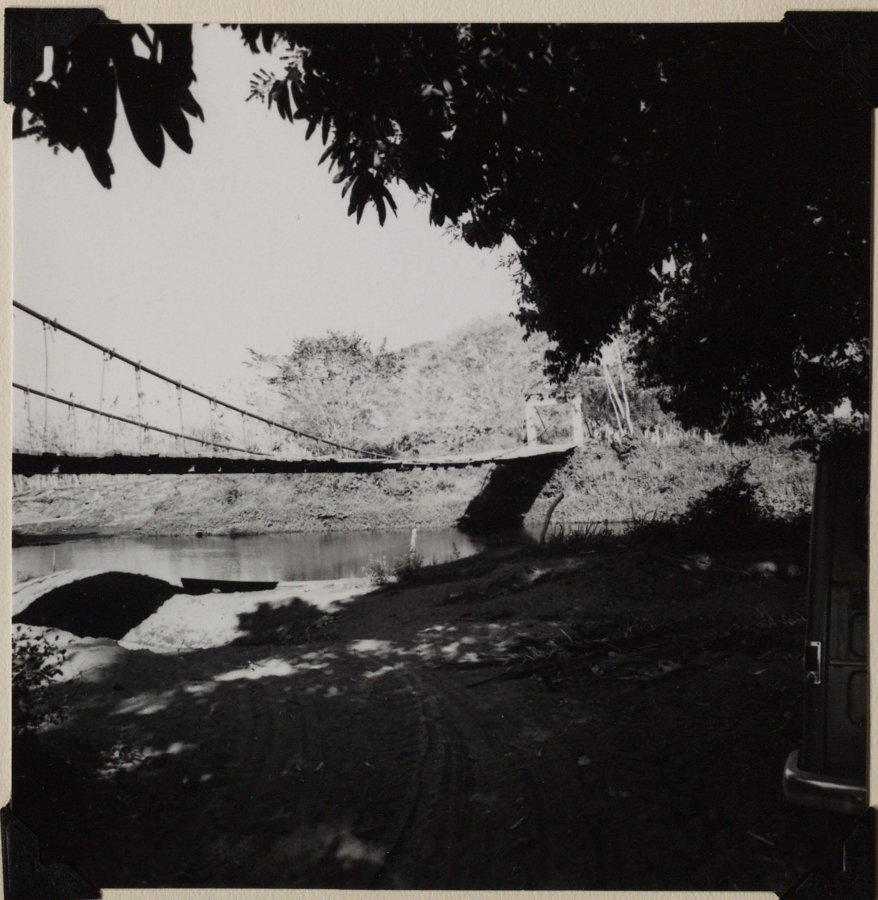


8196. Antonio and Eustorgio,  
Buena Vista, Chiriquí.  
March 11, 1960.





8197. The Serranía de  
Tabasará from Buena Vista,  
Chiriquí.  
March 12, 1960.



8198. The bridge at Canta  
Gallo, below Alanje,  
Chiriquí.  
March 13, 1960.





8199. The Río Escárrea at  
Canta Gallo, Chiriquí.  
March 13, 1960.



8200. Houses at Estero  
Rico, Chiriquí.  
March 13, 1960.





8201. Houses at Estero  
Rico, Chiriquí.  
March 13, 1960.



8202. Houses at Estero  
Rico, Chiriquí.  
March 13, 1960.





8203. El Hato, with Cerro  
Pando (left) and Cerro  
Picacho (right).  
El Volcán, Chiriquí.  
March 14, 1960.



8204. Volcán Barú, from  
above Dolega, 10 miles  
south of Boquete, Chiriquí.  
March 15, 1960.





8205. La Horqueta from  
above Dolega, 10 miles south  
of Boquete, Chiriquí.  
March 15, 1960.



8206. Boquete, Chiriquí  
from the south entrance.  
March 15, 1960.





8207. Eastern slope of  
the volcano from the Palo  
Alto trail above  
Boquete, Chiriquí.  
March 16, 1960.



8208. Boquete, Chiriquí  
from east.  
March 17, 1960.





8209. The Alfredo Prieto family, San Félix, Chiriquí. March 23, 1960.



8210. The Alfredo Prieto family, San Félix, Chiriquí. March 23, 1960.





8211. The Alfredo Prieto  
store in San Félix, Chiriquí.  
March 23, 1960.



8212. View from the  
highway at Quebrada  
Piedra, Chiriquí.  
March 24, 1960.





8213. A.W. at the La Jagua  
Hunting Club, Panamá.  
March 27, 1960.



8214. Bea and the jeep  
at La Jagua, Panamá.  
March 27, 1960.





8215. The Lowery home in  
Baton Rouge, Louisiana.  
April 1, 1960.