



Smithsonian Institution  
*National Museum of Natural History*

Department of Anthropology  
*National Anthropological Archives*

***NAA MS 4800 [23]***  
***James O. Dorsey papers, circa 1870-1956, bulk 1870-1895***  
***34 drawings 1879-1880***  
***National Anthropological Archives, Smithsonian Institution***

Please cite the material in the following format:

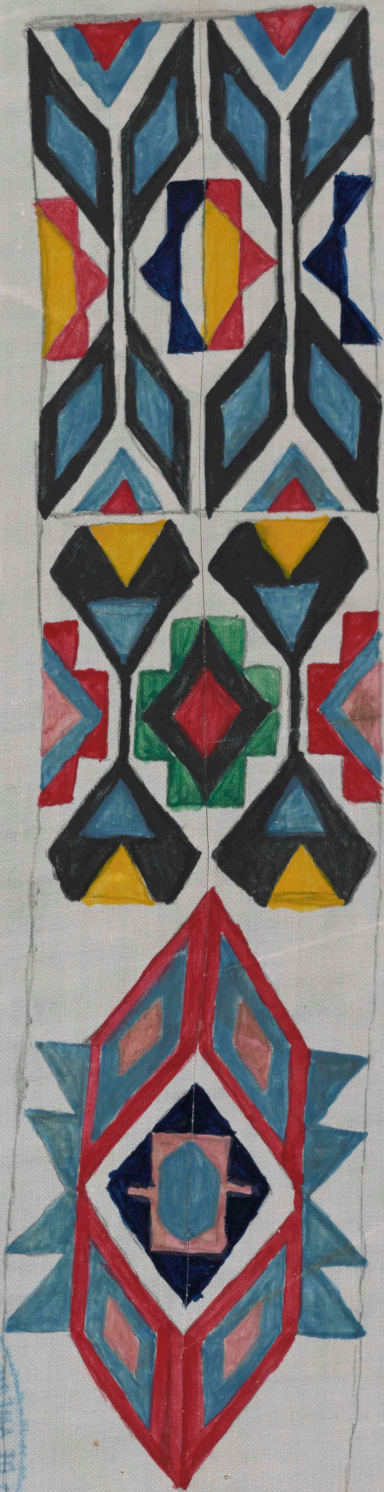
*"NAA MS [Manuscript Number], National Anthropological Archives, Smithsonian Institution"*

For example:

*" NAA MS 2108, National Anthropological Archives, Smithsonian Institution"*



No. 1.



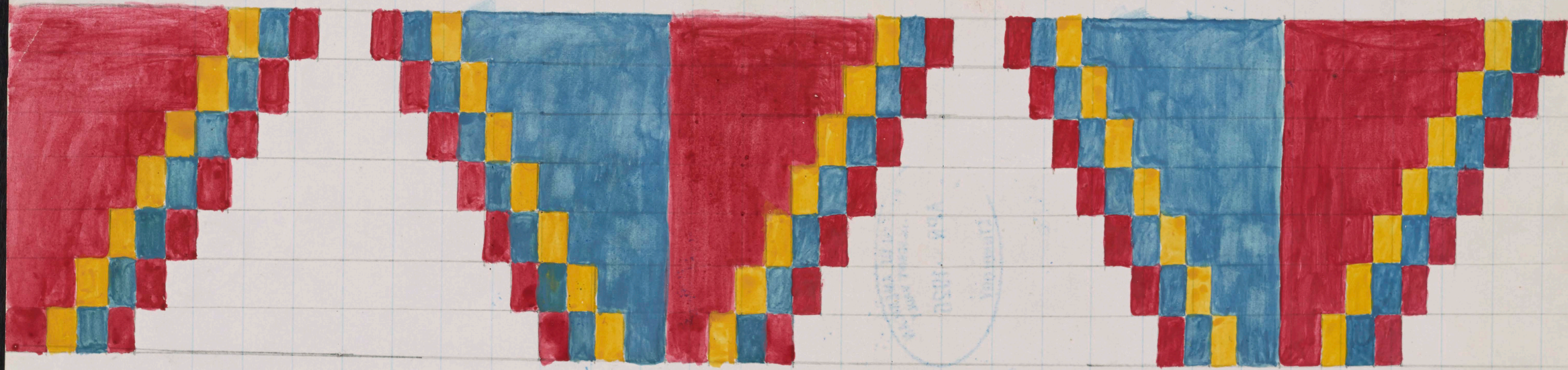
1950  
RPA  
1950  
MUSEUM OF ETHNOLOGY  
WASHINGTON, D.C.



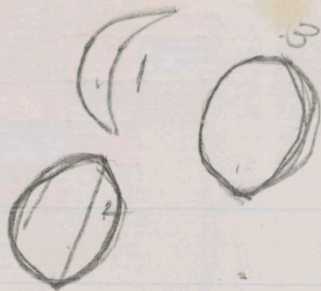


Needle-case made by an Omaha woman. The parts colored here in silks, on red flannel ground.

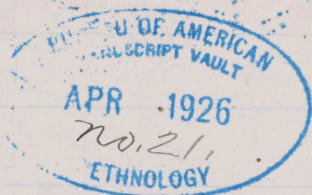




Omaha utan'ehédhe.



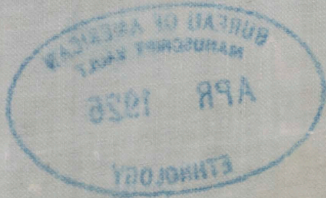
[INV 087 30700]







no. 3.





Watch-case made by  
a Winnebago woman.

Gilt beads on  
a gray back-  
ground.

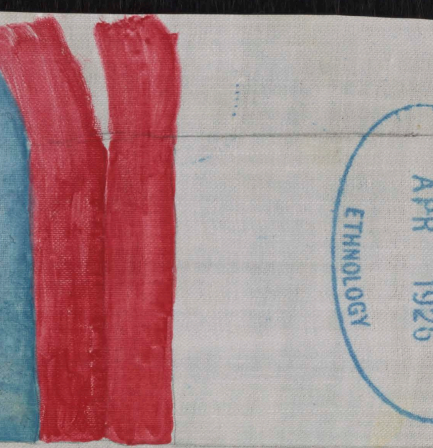
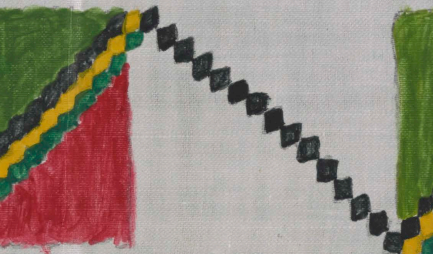
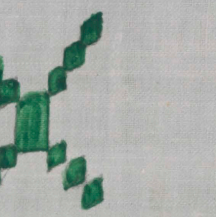


PROGRESS  
1894  
1894



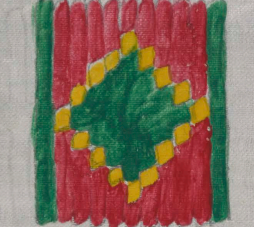






BUREAU OF AMERICAN ETHNOLOGY  
APR 1925  
MANUSCRIPT VAULT

BUREAU OF AMERICAN ETHNOLOGY  
APR 1926  
No. 23  
MANUSCRIPT VAULT







BUREAU OF AMERICAN  
MANUSCRIPT VAULT  
APR 1926  
no. 19.  
ETHNOLOGY



BUREAU OF AMERICAN  
MANUSCRIPT VAULT  
APR 1926  
No. 33.  
ETHNOLOGY



Omaha garter, "te-zhi-zhi-de" style -  
fringe 1/2 yd. long



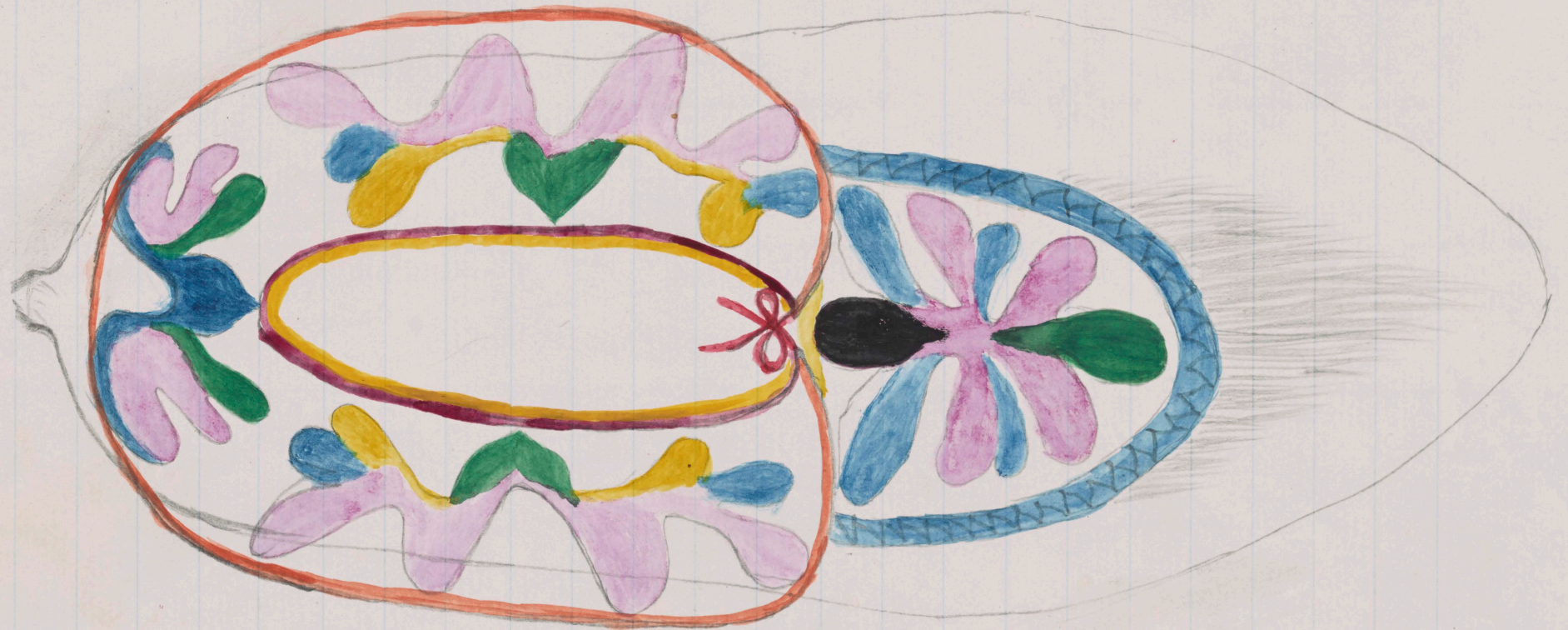


BUREAU OF AMERICAN  
MANUSCRIPT VAULT  
APR 1926  
No. 32.  
ETHNOLOGY



Winnebago moccasin, worn by a woman.

BUREAU OF AMERICAN  
MANUSCRIPT VAULT  
APR 1926  
No. 28,  
ETHNOLOGY





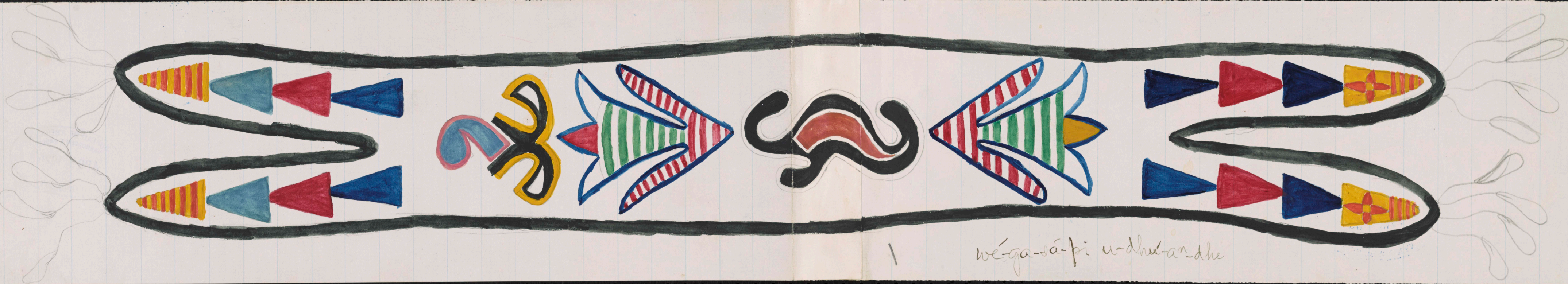


BUREAU OF AMERICAN  
MANUSCRIPT VAULT  
APR 1926  
no. 29.  
ETHNOLOGY



Omaha beadwork patterns for moccasins



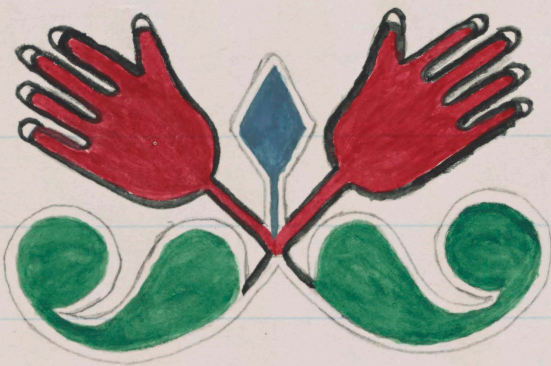


wé-ga-sá-pi u-dhu'-an-dhe

Background  
near the  
above  
color







BUREAU OF AMERICAN  
MANUSCRIPT VAULT  
APR 1926  
MA 31,  
ETHNOLOGY



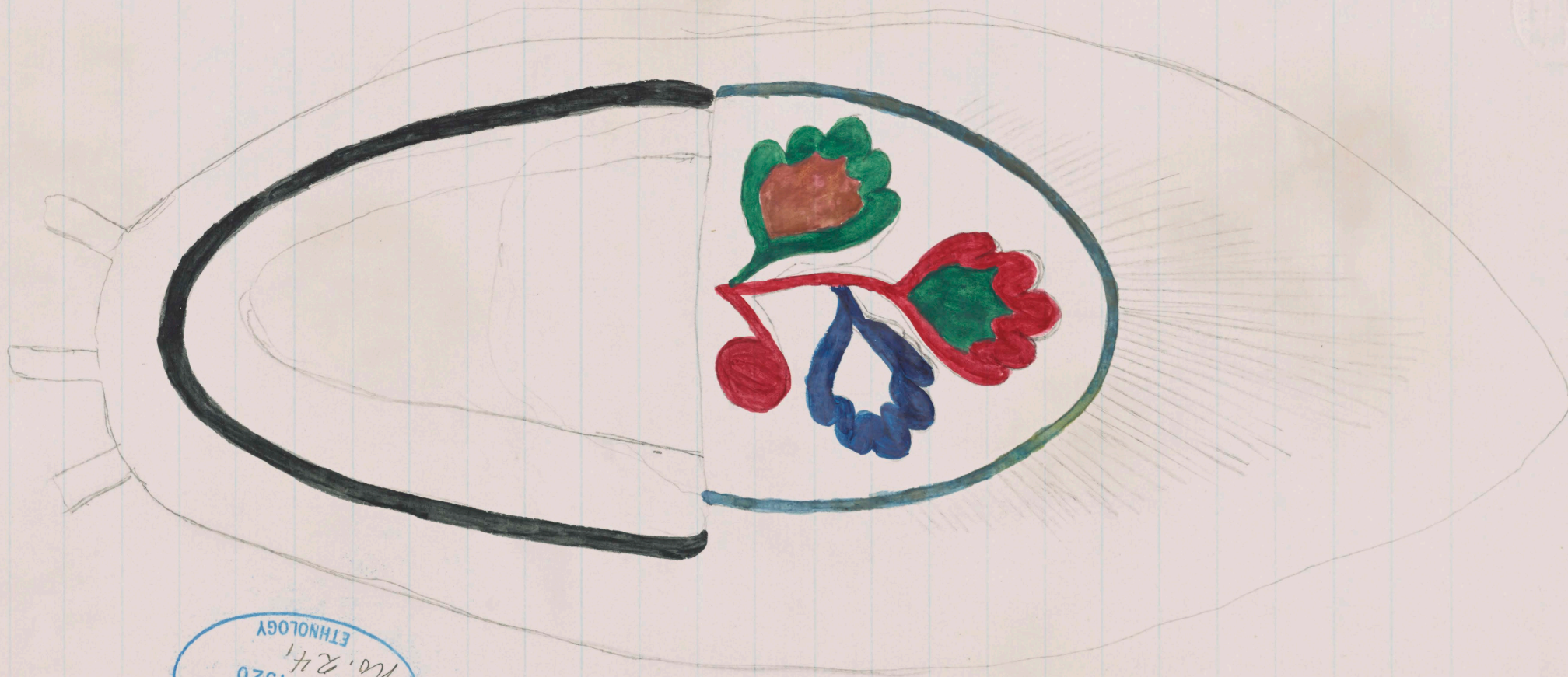
Omaha beadwork patterns for moccasins





No. 2.

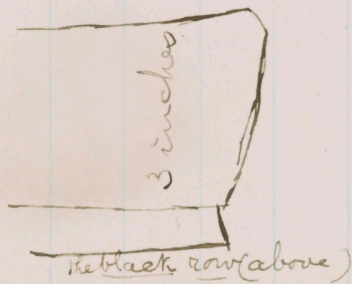




BUREAU OF AMERICAN  
MANUSCRIPT VAULT  
APR 1926  
No. 241  
ETHNOLOGY

The *hin-be-di-ha'* of this moccasin is 3 in. wide

Dakota ( ) moccasin.



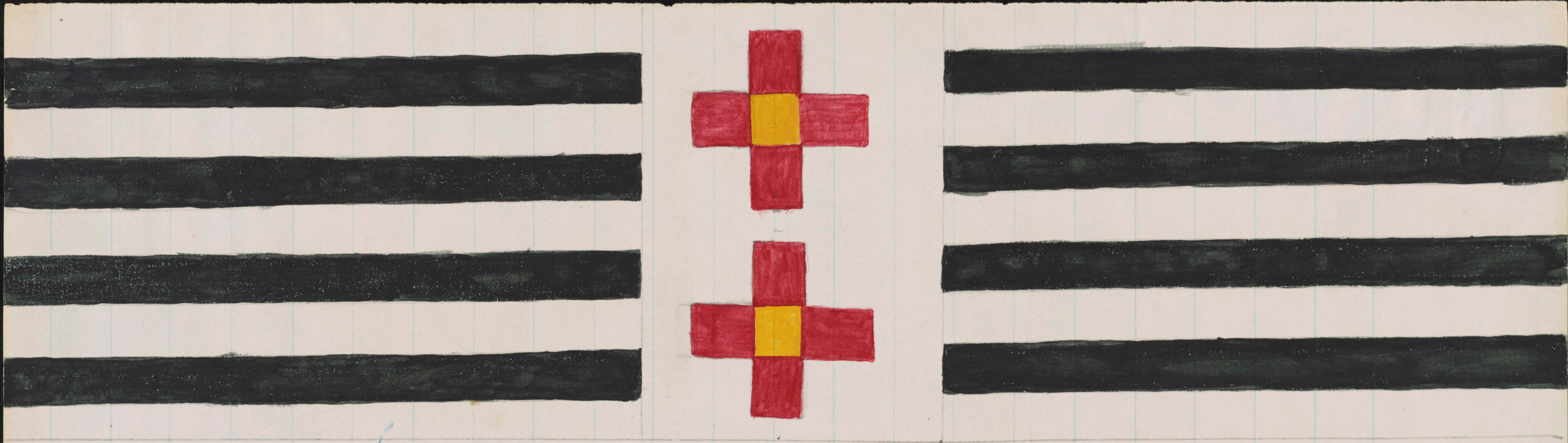


Winnebago (man's) moccasin.

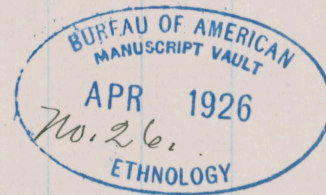


BUREAU OF AMERICAN  
MANUSCRIPT VAULT  
APR 1926  
no. 25  
ETHNOLOGY

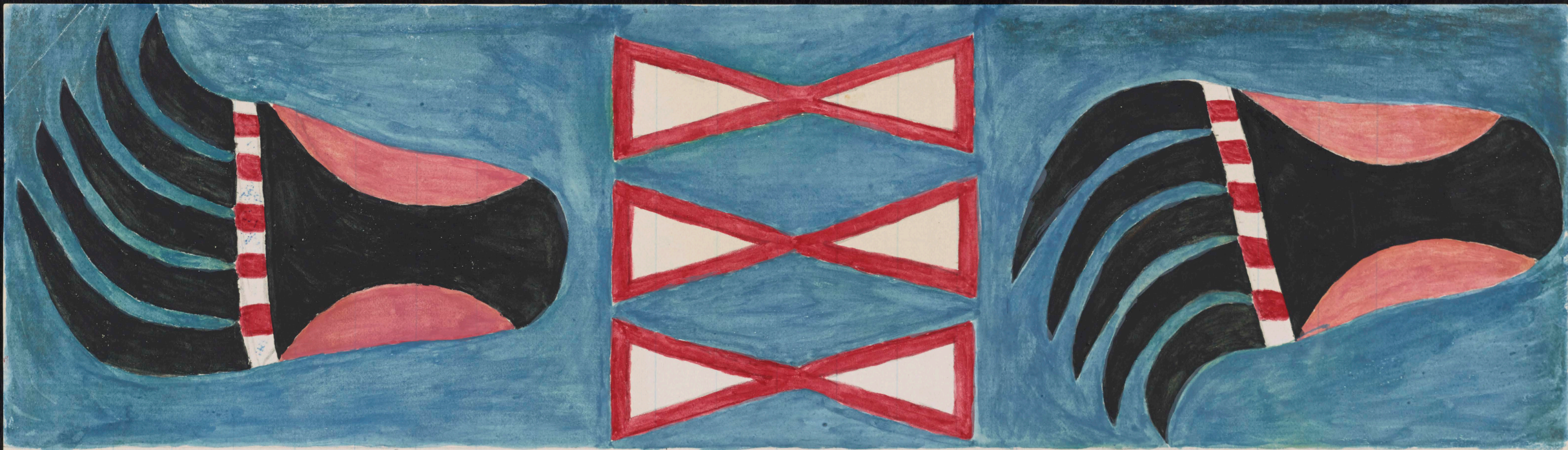




Omaha bead-work on leggings [u-tan' = e-he'.dhe]. Another ~~pattern~~ pair differed only in having the crosses black, where these are red.

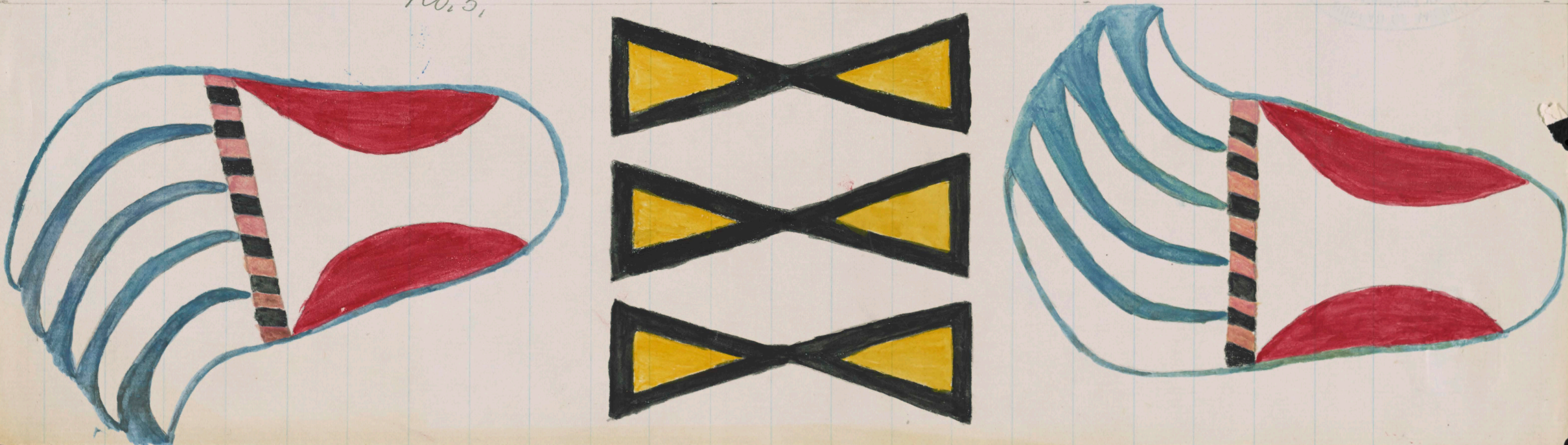






Omaha utan<sup>n'</sup>-e-he'dhe, two patterns, "bear-claws" style. [Each is on a blue ground. Bear-claws alternate, on each pair]

No. 5,





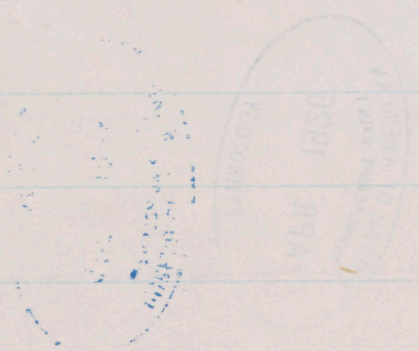
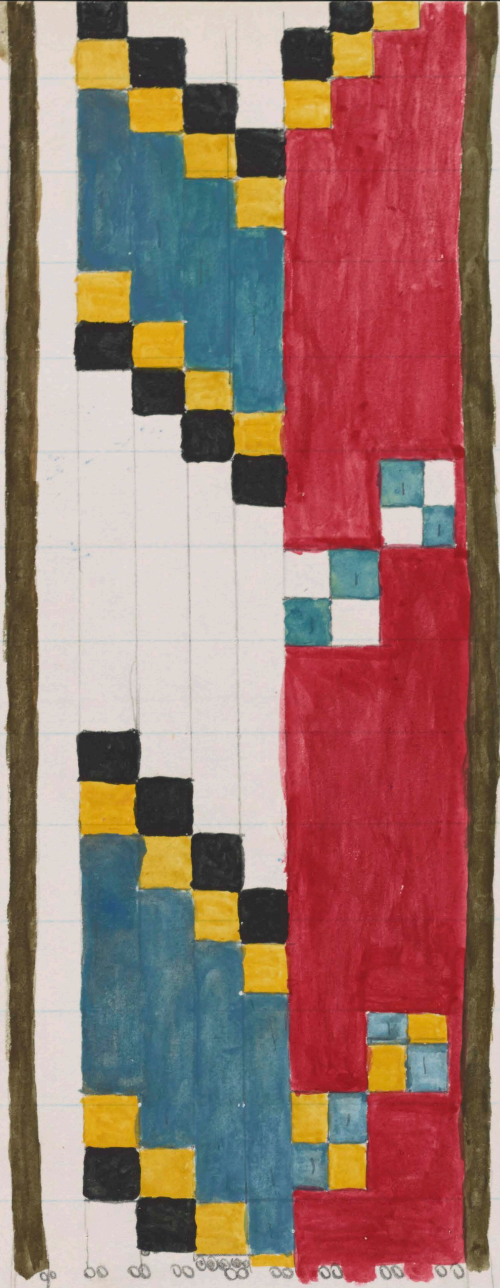


BUREAU OF AMERICAN  
MANUSCRIPT VAULT  
APR 1926  
no. 34,  
ETHNOLOGY



Pattern of bead-work on Omaha leggings





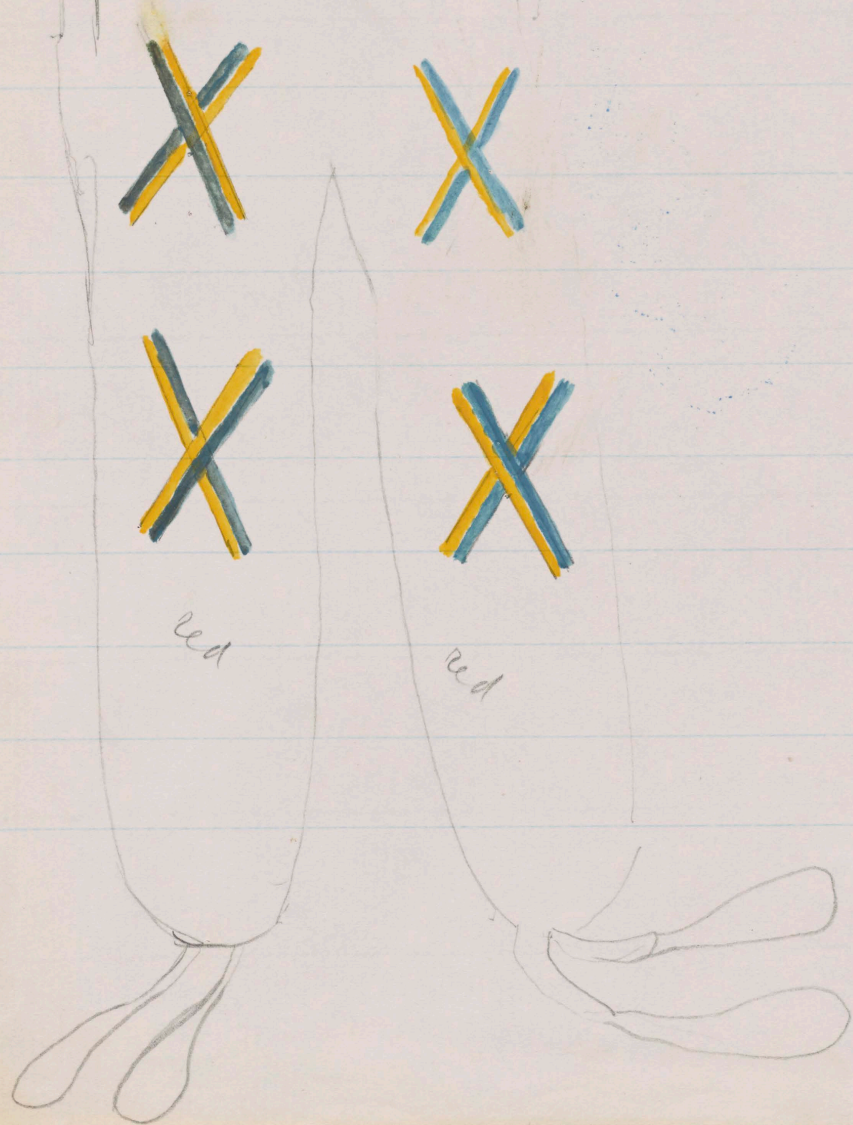
BUREAU OF AMERICAN  
MANUSCRIPT VAULT  
APR 1926  
ETHNOLOGY

*No. 8.*

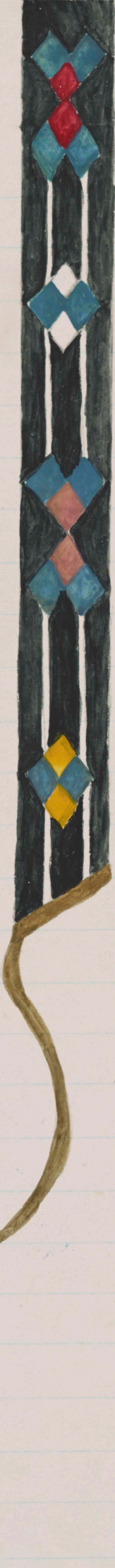
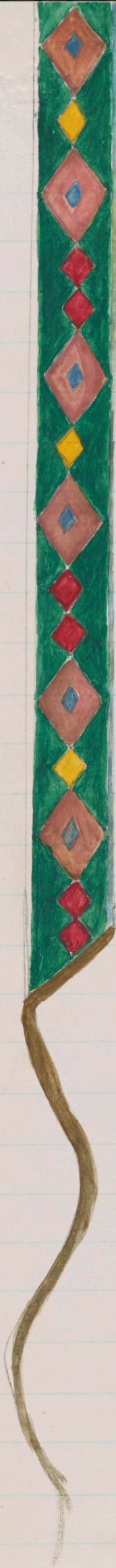


*red*

*red*

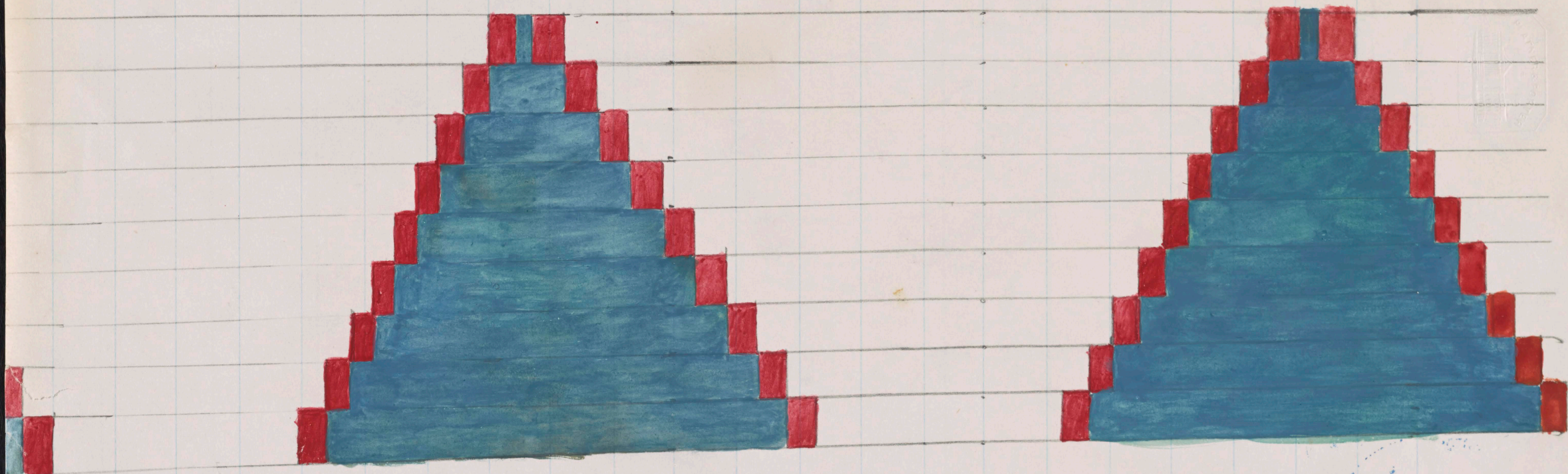






no. 4.





Ponka utan' = e-he-dhe, in "red, white, and blue."

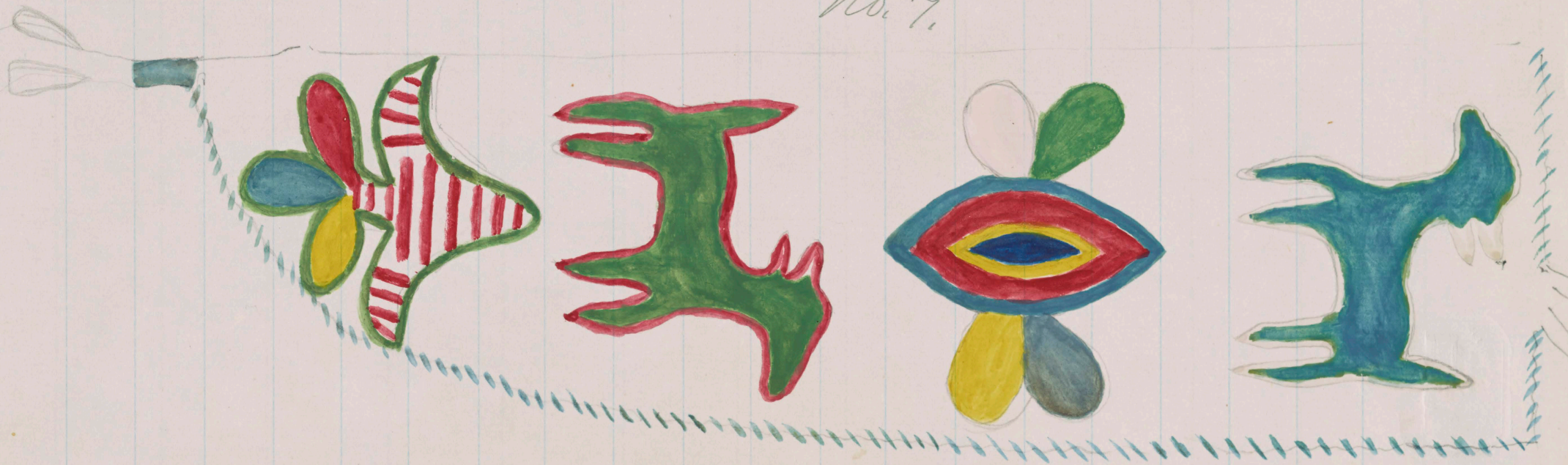
no. 6.







Dakota knife sheath, ornamented with bead-work  
Jiw rattles at the bottom, on the strings.  
No. 7.





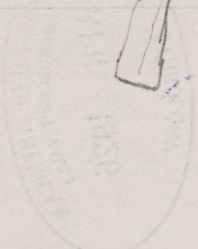
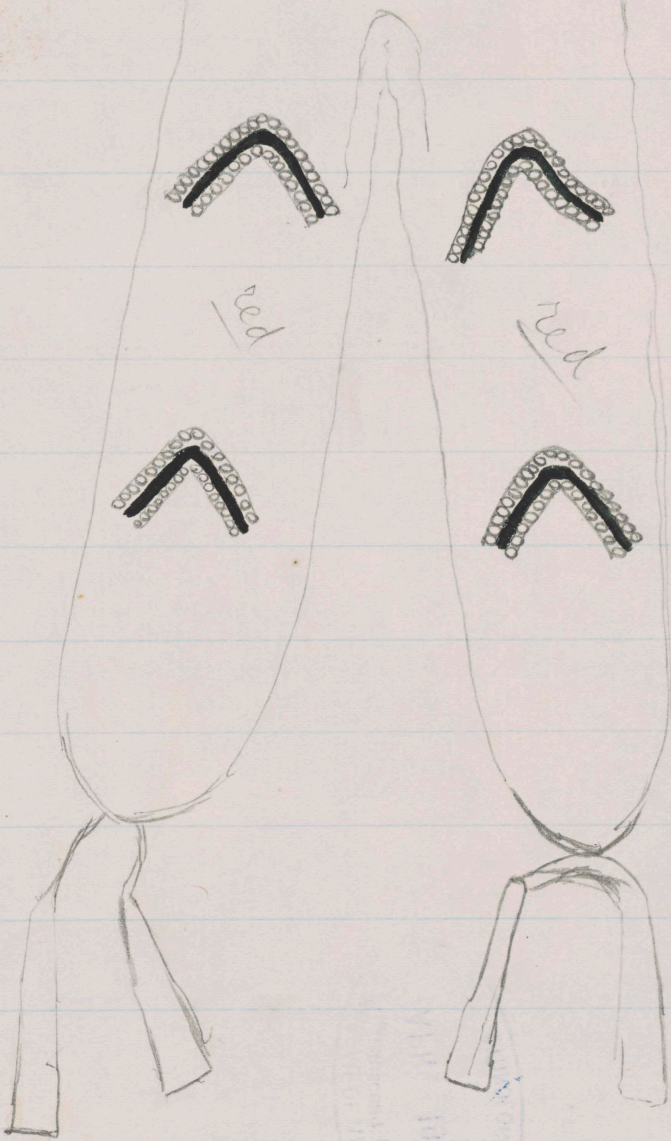
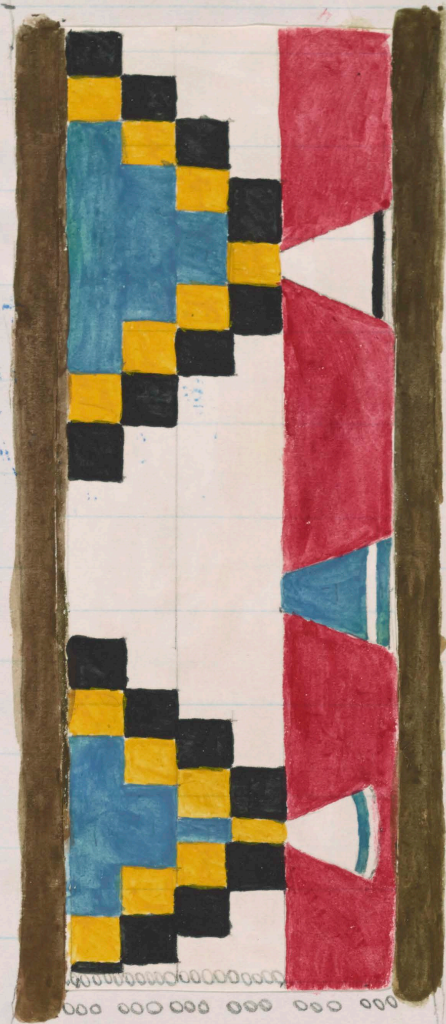
x

x pink



Section of a Winnebago necklace (1/3) no. 9.



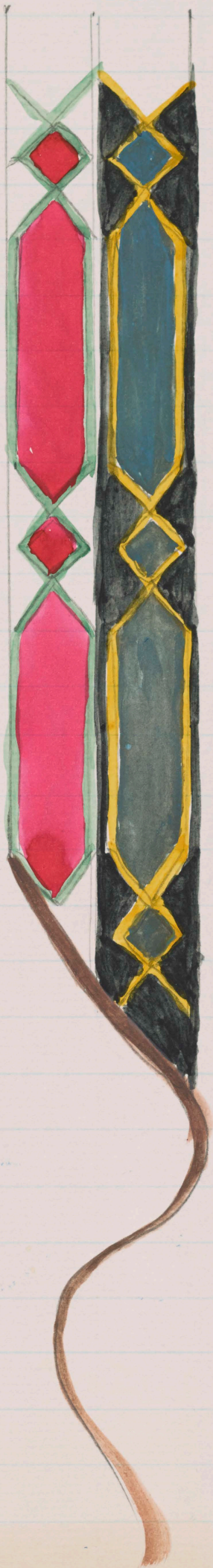


Ms. 10,

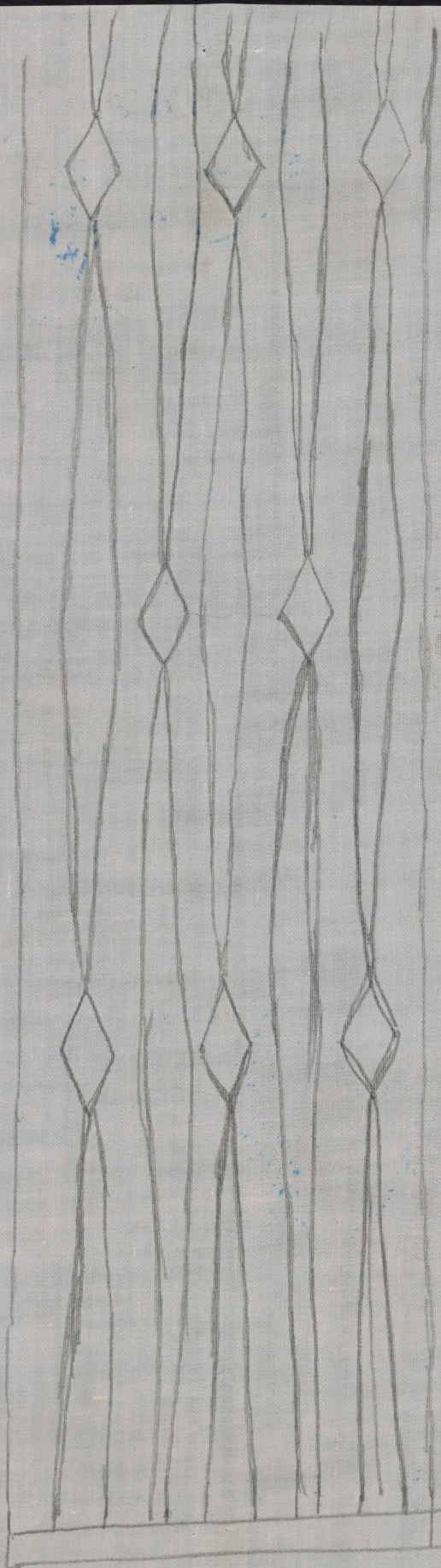


ETHNOLOGY  
APR 1926  
BUREAU OF AMERICAN  
MANUSCRIPT VAULT

no. 12.







11.02



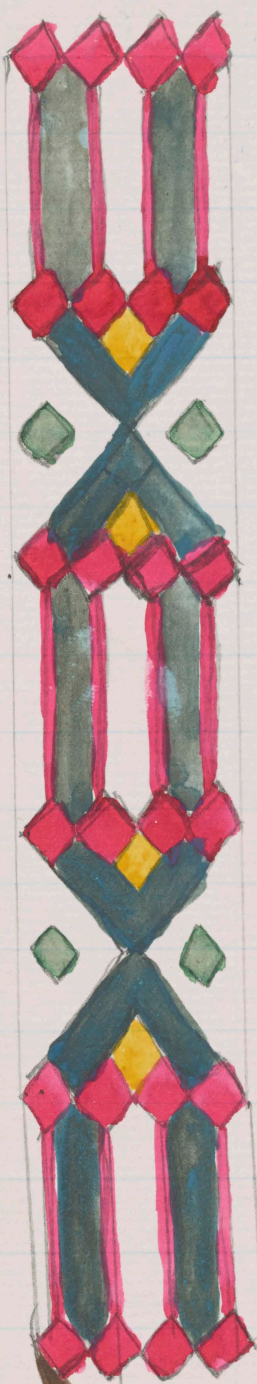


BUREAU OF AMERICAN  
MANUSCRIPT VAULT  
APR 1926  
171002  
ETHNOLOGY

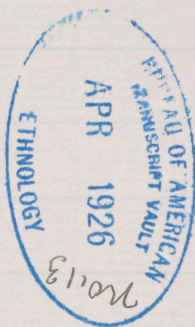
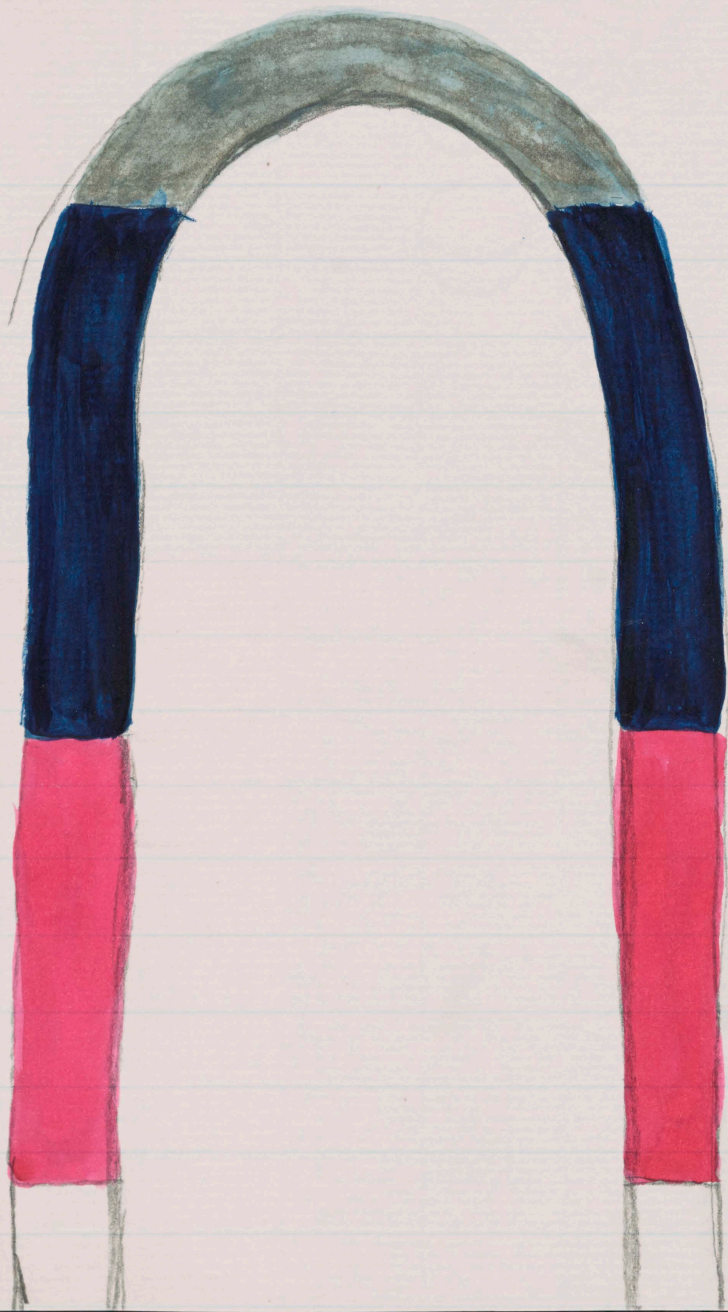




BUREAU OF AMERICAN  
MANUSCRIPT VAULT  
APR 15 1926  
ETHNOLOGY











*white*

BUREAU OF AMERICAN  
MANUSCRIPT VAULT  
APR 1926  
*No. 16.*  
ETHNOLOGY





APR 17 1926  
BUREAU OF AMERICAN  
MANUSCRIPT VAULT  
ETHNOLOGY





4800

DORSEY

PAPERS:

Siouan

(3.0)

[36]

29

DORSEY, JAMES OWEN.

34 drawings of beadwork and other designs on articles used by the Winnebago, Omaha, Dakota, and possibly other Siouan tribes; 32 colored with water colors; some have numbers or captions in Dorsey's hand. [1879-1880] 34 L. and slips.

[old no. 939(complete)]

RDW/68



32 Colored designs for  
Ornamentation, And  
2 line designs for the same  
purpose.





Smithsonian Institution  
*National Museum of Natural History*

Department of Anthropology  
*National Anthropological Archives*

**The Smithsonian continues to research information on its collections. Contact Smithsonian for current status.**

Please observe the following rules for file sharing, which are intended to help protect the integrity of the material and associated information.

- Do not incorporate material into a publicly accessible database or website without checking with the National Anthropological Archives (NAA).
- Do not post whole manuscripts to a social media site, such as a blog, Facebook page, Twitter feed, etc;
- Do not modify or obscure the source information or copyright notice included in the material;
- If you deposit the material in a tribal library or resource center, make sure that the library or resource center knows the source of the original material and is aware of these rules. Please let the NAA know where material is deposited so that we can guide community members to it.

Questions? [naa@si.edu](mailto:naa@si.edu).