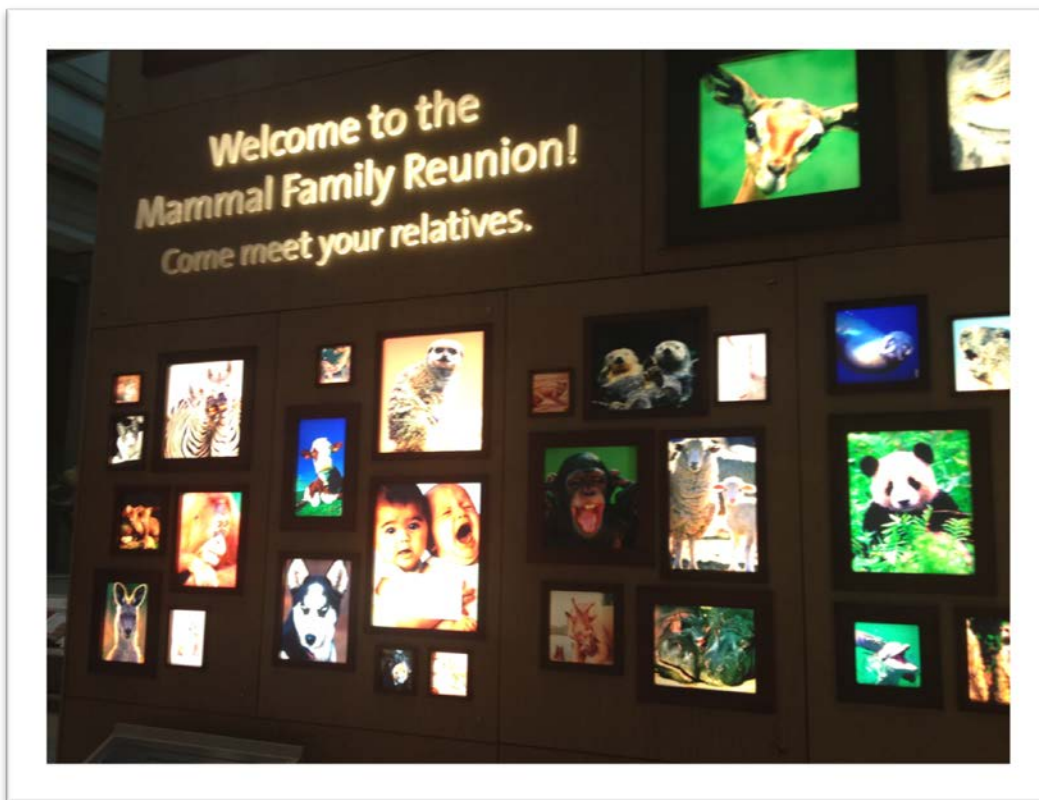


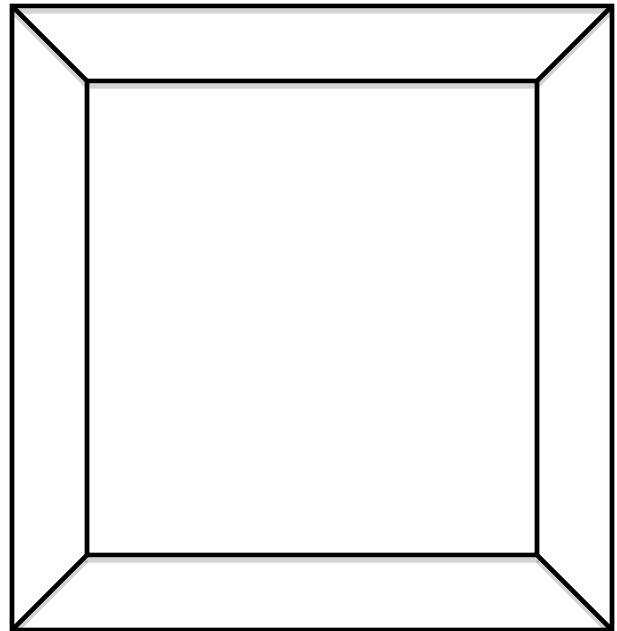
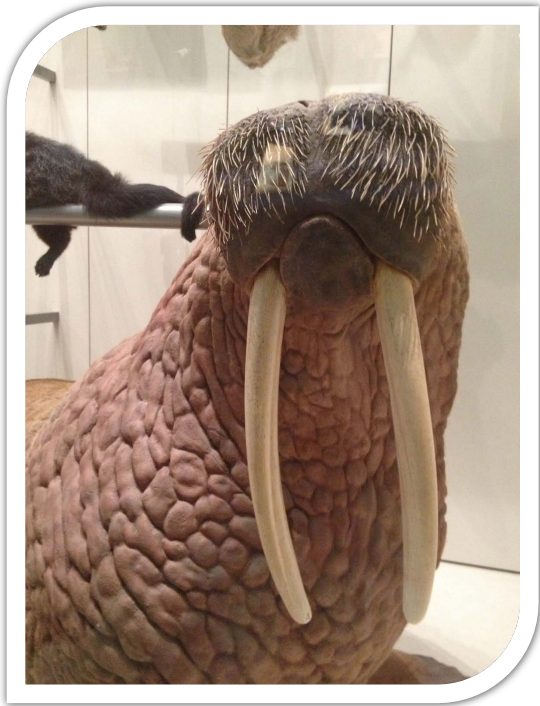
Welcome to the Mammal Family Reunion!

At the start of the Mammal Hall in the Smithsonian, there is a sign, “Welcome to the Mammal Family Reunion! Come meet your relatives.” Below it are photos of mammals – a panda, babies I don’t know, and other mammals, too. What does this sign mean?



I have relatives. I have parents and grandparents and other relatives, too. I’ve been to family parties and reunions and met members of my family. But none of them are on the sign. Am I a relative of pandas, zebras, sheep, monkeys, dolphins, dogs, and kangaroos, too?

There's more than one meaning of the word 'relative'. In Mammal Hall, all of the animals are very different from one another. Still, they are all the same in one important way. They are mammals. That's how they are *related* to one another. That's why they are relatives.



Insert your picture

I am a mammal. A walrus is a mammal. We are *related* to one another because we are both mammals.

Mammal Hall at the Smithsonian Natural History Museum is a collection of many different mammals. Some of them are up high or behind ropes and glass. MOST of the mammals are the people who visit here each year, like me!